

A profile of youth and young adults with criminal offences

Child and Youth Data Laboratory (CYDL) Longitudinal Project

Introduction

This report is an overview of the experiences of young Albertans with criminal offences (12 to 25 years) from 2005/06 to 2010/11. Individuals with criminal offences include those (aged 12 or older) charged with offences under various federal statutes. Individuals may or may not have findings of guilt.

Criminal offence counts are defined as the number of offences from a federal statute in a given study year. Number of offence counts refer to the number of offences per individual not incidents.

Offence type was grouped into property (e.g. theft, break and enter, fraud), drug-related (e.g. possession, trafficking), violent (e.g. homicide, sexual assault, uttering threats), administrative (e.g. failure to comply with an order, failure to appear, breach of probation), and other criminal (e.g. possession and other weapons offences, disturbing the peace, remaining Criminal Code).

Key Findings

- 3% of youth and young adults in Alberta had criminal offences in a given year (range 22,415 to 25,135).
- The proportion of youth and young adults with criminal offences who were female increased over time.
- The proportion of individuals with offences who were meeting or exceeding educational expectations increased over time.
- The most common types of offences among individuals with criminal offences were administrative and property, followed by violent and other criminal. The percentage of individuals with drug offences was the lowest.
- Youth with administrative offences were the least likely to be meeting or above educational expectations, compared to youth with other offence types.
- Compared to other offence types, individuals with drug-related offences tended to be older, lived in better socio-economic areas, and moved between residences less.
- A lower proportion of individuals with drug-related offences were high cost health users, performed below educational expectations, or received services for a mental health condition, Child Intervention, or Income Support.

This report is part of the Longitudinal Project by the CYDL in collaboration with Alberta partnering government ministries. Please see the last page for a brief description of the project and go to <https://policywise.com/initiatives/cydl/p2> to access other deliverables.

Visit <https://visualization.policywise.com/P2dashboard> to view an interactive dashboard that summarizes this population. This report is a companion to the interactive dashboard.



Contents

<i>Key findings and Context.....</i>	<i>1 to 2</i>
<i>Data analyses.....</i>	<i>3 to 13</i>
<i>Tables.....</i>	<i>14 to 42</i>
<i>Definitions and Notes.....</i>	<i>43 to 44</i>
<i>References.....</i>	<i>45</i>
<i>About CYDL.....</i>	<i>47</i>

Background literature

Providing a context for the current report, this section highlights select literature focusing on factors related to criminal activity in Canada.

In Canada, youth must be aged 12 or older to be charged with an offence¹. Individuals aged 12 to 17 are charged as youth offenders and those 18 and older are charged as adult offenders with some exceptions¹.

The crime rate has been decreasing in Canada for the last 20 years². The decrease is mostly due to a reduction in property offences².

The most common age of a youth offender is 16 to 17 years³, and the highest proportion of adult offenders are aged 25 to 34 years, followed by 18 to 24 years of age⁴. More males than females are charged with offences^{3,4}. Property, violent, and administration of justice offences are most common among both young and adult offenders^{3,4}.

Youth and young adults with criminal offences have complex service needs. They are more likely to use emergent health services such as emergency room visits and hospitalizations but are less likely to have visits with a physician⁵. Mental health challenges and substance use are common among youth and young adults involved in the justice system^{6,7}. Youth who receive child intervention services have been found previously to be overrepresented in the justice system⁸. Youth who are disengaged with school or who have special needs are also more likely to have criminal involvement^{7,8}.

Positive factors associated with less delinquency include high emotional capacity, parents who are nurturing and high monitoring, connection with school and non-delinquent friends, high self-esteem, adaptability, and self-motivation⁷.

Footnotes

The data analyses in this report include data from Justice and Solicitor General.

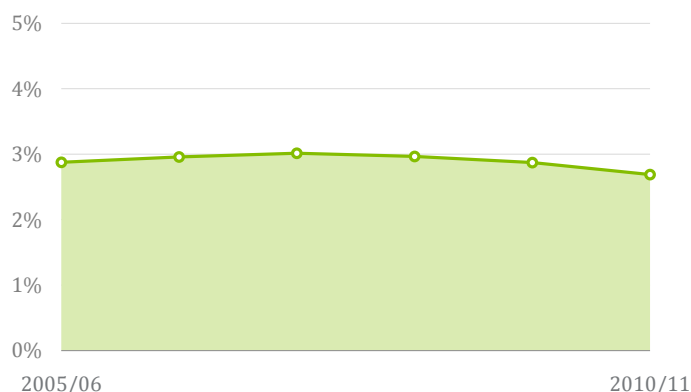
- Non-criminal offences from Provincial statutes are excluded from these analyses. Criminal offences are defined as those from any federal statute include the Youth Criminal Justice Act.
- Offence type was determined by grouping offence codes based on categories commonly used by Statistics Canada. See *Definitions and Notes* (p. 44) for a full breakdown of offence type by category.
- Administration of justice offences (termed “Administrative”) are failure to comply or breach offences that are associated with one or more other offence. This means that every individual with an Administration of justice charge, had at least one other offence of a different offence type.

Criminal offences (Table 1)

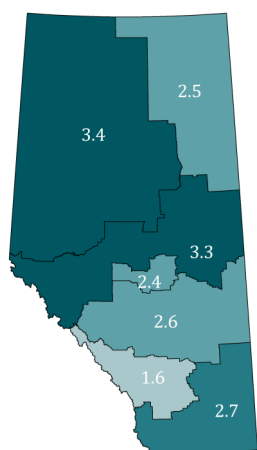
This and the following analyses consider young Albertans (aged 12 to 25 unless otherwise specified). See *Definitions and Notes* for more information about the population being profiled (p. 44).

- Just under 3% of young Albertans had a criminal offence.
- This pattern remained relatively stable across the study years.

Percentage of Albertans aged 12 to 25 with criminal offences over time



Percentage of Albertans aged 12 to 25 with criminal offences in 2010/11, by Human Services region



Human Services regions by criminal offences (Table 2)

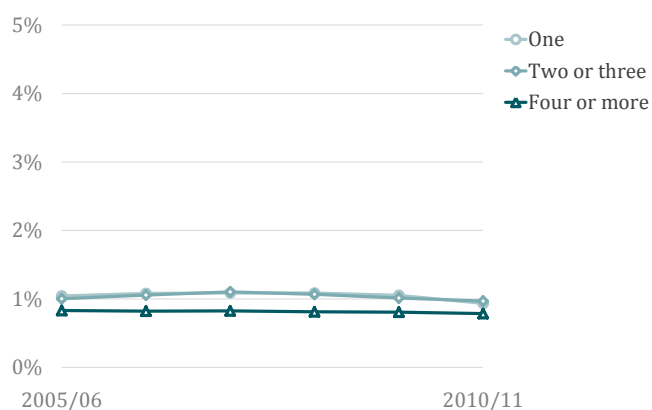
For information on regional analyses and a legend, see *Definitions and Notes* (p. 43). Rates are shown for 2010/11 (see Table 2 for other study years).

- The percentage of young Albertans with offences was higher in Northwest and North Central regions.
- A lower percentage of youth and young adults in the Calgary region were charged with criminal offences.

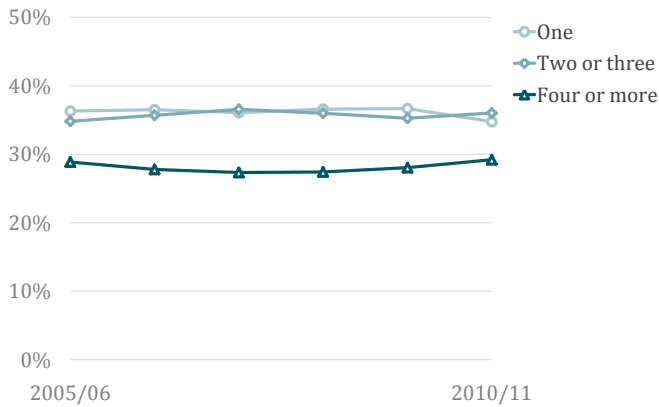
Number of offence counts- population level (Table 1)

- Youth and young adults were equally likely to have one offence or two to three offences.
- A slightly lower proportion of Albertans received four or more offences.
- The pattern of number of offence counts was relatively consistent over time.

Percentage of Albertans aged 12 to 25 by number of offence counts over time



Percentage of Albertans aged 12 to 25 with at least one criminal offence, by number of offence counts over time



Number of offence counts (Table 1)

Number of offence counts is shown as a percentage of those with at least one criminal offence

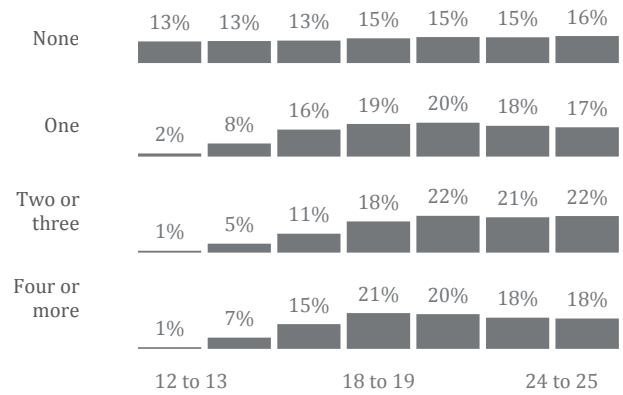
- Approximately a third of youth and young adults with criminal offences had one, two or three, or four or more offences.
- A slightly lower percentage had four or more offences.

Age group by number of offence counts (Table 3a,b)

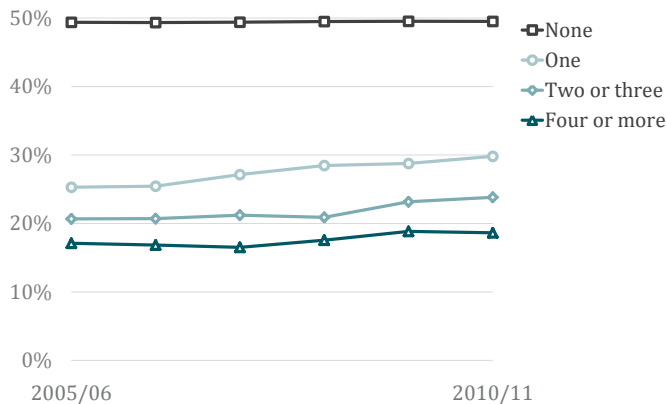
Age shown is for 2010/11 (see Table 3 for age distribution in each study year).

- Very few youth aged 12 to 15 had offences.
- Criminal offences peaked at ages 18 to 21 and the age pattern varied little by number of offence counts.

Percentage of young Albertans, by age group in 2010/11 and number of offence counts



Percentage of Albertans aged 12 to 25 who were FEMALE, by number of offence counts over time

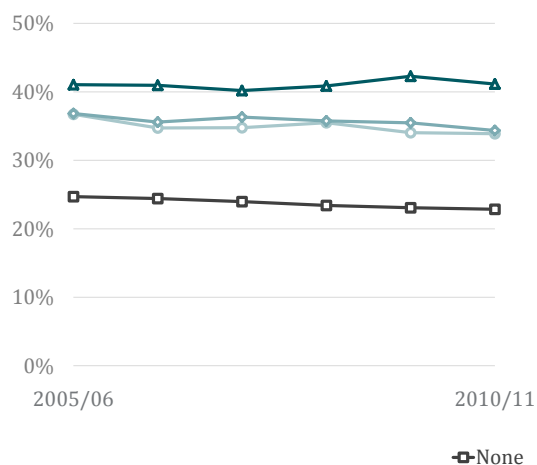


Gender by number of offence counts (Table 4)

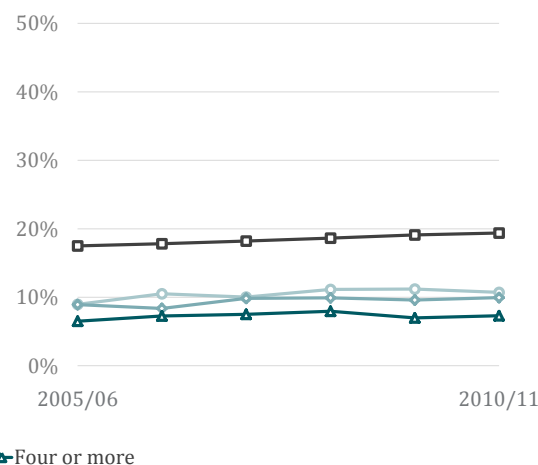
- Females were less likely to have criminal offences than males.
- As number of offence counts increased, the proportion of female offenders decreased.
- The proportion of females among those charged with an offence increased across study years.

Socio-economic status by number of offence counts (Table 5a,b)

Percentage of Albertans aged 12 to 25 who lived in the lowest SES areas, by number of offence counts over time



Percentage of Albertans aged 12 to 25 who lived in the highest SES areas, by number of offence counts over time



Socio-economic status (SES) captures the social and material environments in which individuals live. See *Definitions and Notes* for further clarification (p. 44).

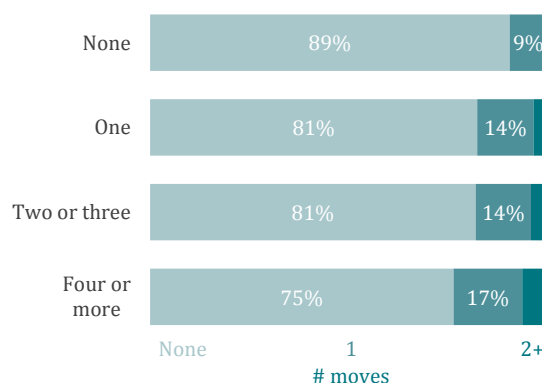
- Individuals with no offences were proportionally more likely to live in the highest socio-economic status neighbourhoods and less likely to live in the lowest socio-economic status neighbourhoods as compared to youth and young adults with offences.
- A higher proportion of youth and young adults with four or more offences lived in the lowest socio-economic status neighbourhoods over time compared to individuals with less offences.

Residential mobility by number of offence counts (Table 6)

Residential mobility was determined using the number of unique postal codes in the Alberta Health registry. Residential mobility is shown in 2010/11 (see Table 6 for mobility in each study year).

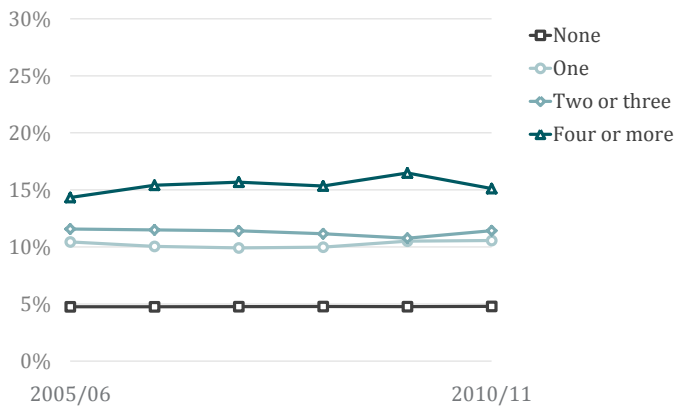
- Youth and young adults with criminal offences were more likely to move one or more times as compared to those with no offences.
- Individuals with four or more offence counts had the highest percentage with one or more moves.

Percentage of Albertans aged 12 to 25, by residential mobility in 2010/11 and number of offence counts



Criminal offences

Percentage of Albertans aged 12 to 25 who were high cost health service users, by number of offence counts over time



High cost health service use by number of offence counts (Table 7)

For a definition of high cost health service users see *Definitions and Notes* (p. 43).

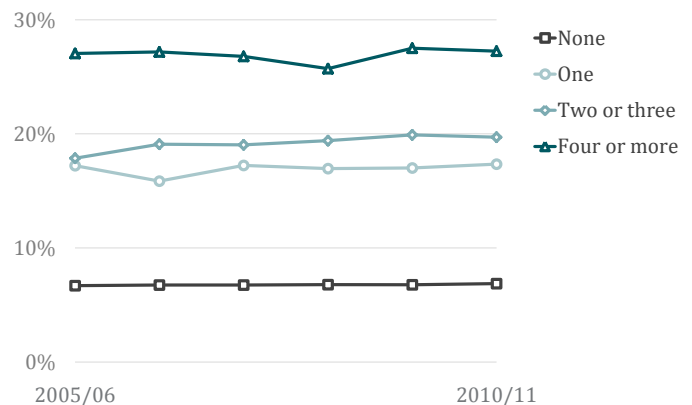
- More offences were associated with a greater proportion of high-cost health service users.

Mental health service use by number of offence counts (Table 8)

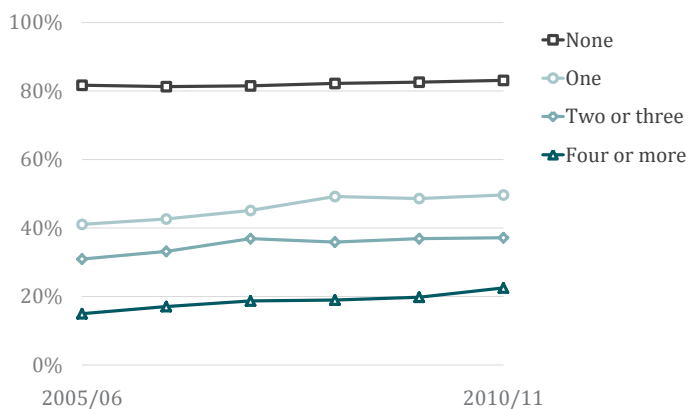
Mental health service use is defined as receipt of a diagnosis from select services. See *Definitions and Notes* for more details (p. 44).

- As number of offence counts increased, the percentage with mental health service use also increased.
- There was no discernable pattern over time.

Percentage of Albertans aged 12 to 25 who used a mental health service, by number of offence counts over time



Percentage of Albertans in grades 3 to 12 who were meeting or above educational expectations, by number of offence counts over time



Educational achievement by number of offence counts (Table 9)

This analysis considers individuals in grades 3 to 12 who were registered in the Alberta education system. See *Definitions and Notes* (p. 43).

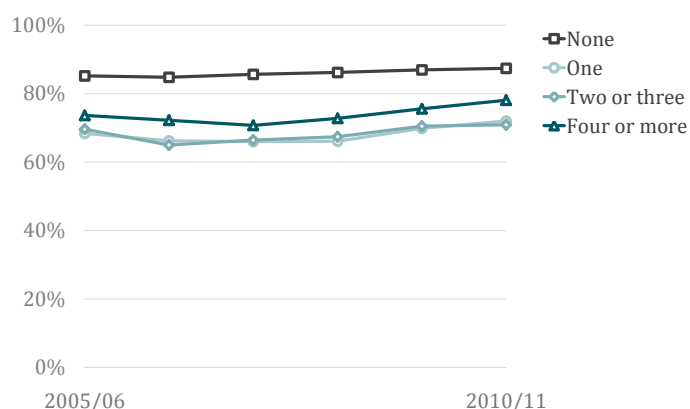
- 81 to 83% of youth and young adults with no offences were meeting or above educational expectations in a given study year in comparison to 41 to 50% with one offence, 31 to 37% with two or three offences and 15 to 23% with four or more offence counts.
- Educational achievement improved over time regardless of number of offence counts.

Health care registration by number of offence counts (Table 10)

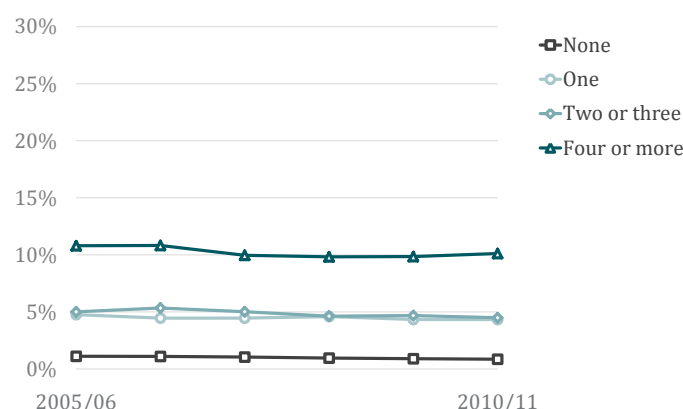
The Alberta Health Care Registry includes all children or youth who are eligible to receive insured hospital and physician services. See *Definitions and Notes* (p. 43) for more inclusion details.

- 85 to 87% of individuals with no offences were registered with Health in a given study year.
- Offenders had lower registration with Alberta Health than those with no offences, regardless of number of offence counts.

Percentage of Albertans aged 12 to 25 who were in the Alberta health care registry, by number of offence counts over time



Percentage of Albertans aged 12 to 22 who received Child Intervention services, by number of offence counts over time



Child Intervention services by number of offence counts (Table 11)

This analysis considers Albertans (aged 12 to 22 years) receiving Child Intervention services. See *Definitions and Notes* (p. 43).

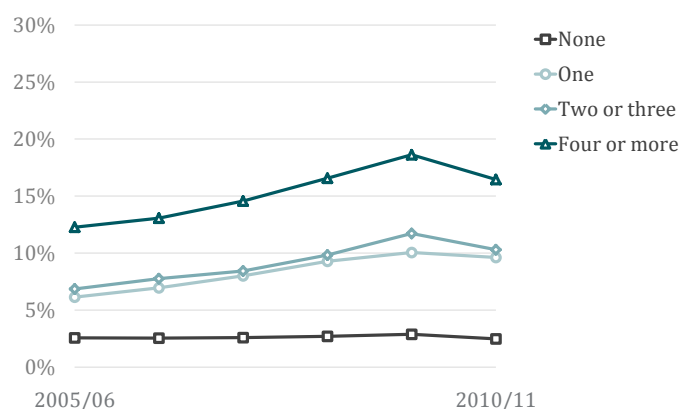
- The proportion of youth and young adults receiving Child Intervention services increased with the increased number of offence counts.
- 1% of individuals with no offences, 4 to 5% with one offence, 5% with two or three offences, and 10 to 11% with four or more offence counts received Child Intervention services in a given study year.

Income Support services by number of offence counts (Table 12)

This analysis considers Albertans (aged 18 to 25 years) who received income support. See *Definitions and Notes* (p. 44).

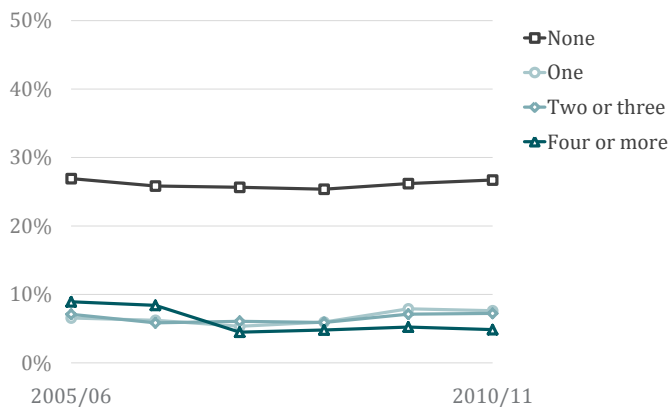
- Income Support services increased across the study period until 2009/10.
- Income Support service use increased with number of offence counts.

Percentage of Albertans aged 18 to 25 who received Income Support, by number of offence counts over time



Criminal offences

Percentage of Albertans aged 17 to 25 who were enrolled in post-secondary, by number of offence counts over time



Post-secondary enrolment by number of offence counts (Table 13)

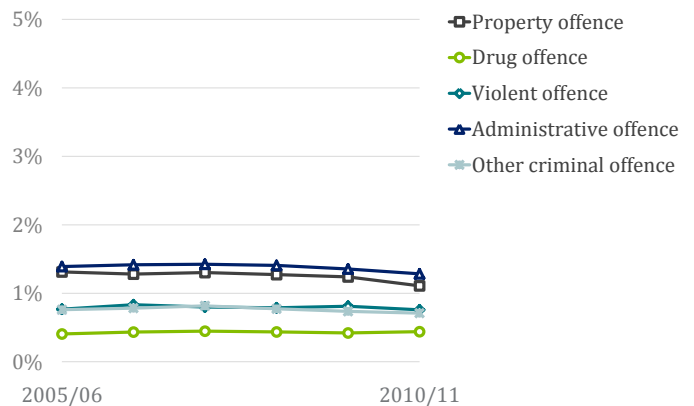
This analysis considers Albertans (aged 17 to 25 years) enrolled in a post-secondary institution. See *Definitions and Notes* (p. 44).

- A lower proportion of youth and young adults with criminal offences were enrolled in a post-secondary institute compared to those with no offences.
- The percentage of individuals with four or more offence counts enrolled in a post-secondary institute decreased slightly in 2008/09.

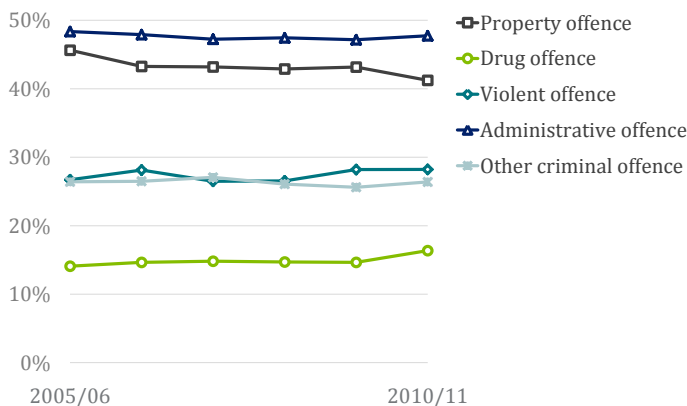
Offence type- population level (Table 14)

- Administrative offences were the most common in the study, followed by property offences.
- Drug-related offences were the least common offence type.

Percentage of Albertans aged 12 to 25 by offence type over time



Percentage of Albertans aged 12 to 25 with at least one criminal offence, by offence type over time



Offence type (Table 14)

This and all following analyses include only those with one or more criminal offence in the study year.

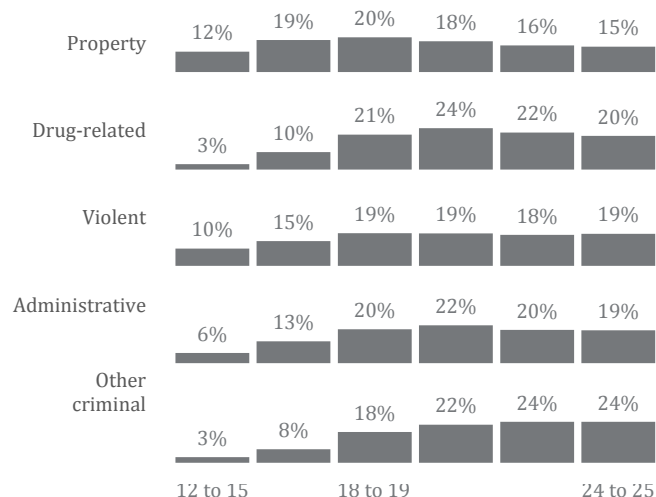
- 47 to 48% of youth and young adults with criminal offences had administrative offences and 41 to 46% had property offences .
- 14 to 16% of individuals with offences had drug-related offences.

Age group by offence type (Table 15a,b)

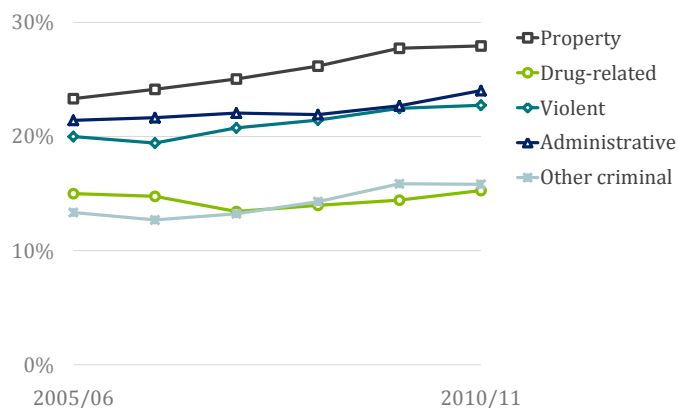
Age shown is for 2010/11 (see Table 15a,b for age distribution in each study year).

- A higher proportion of youth and young adults with property and violent offences were aged 12 to 17, compared to youth with other offence types.
- 10% of youth with violent offences were aged 12 to 15 years.

Percentage of young Albertans with at least one criminal offence, by age group in 2010/11 and offence type



Percentage of Albertans aged 12 to 25 with at least one criminal offence who were FEMALE, by offence type over time

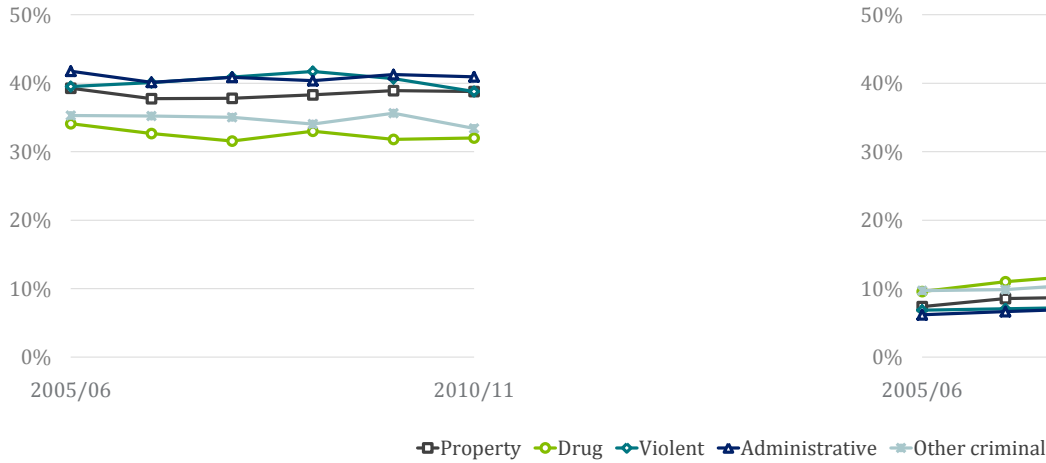


Gender by offence type (Table 16)

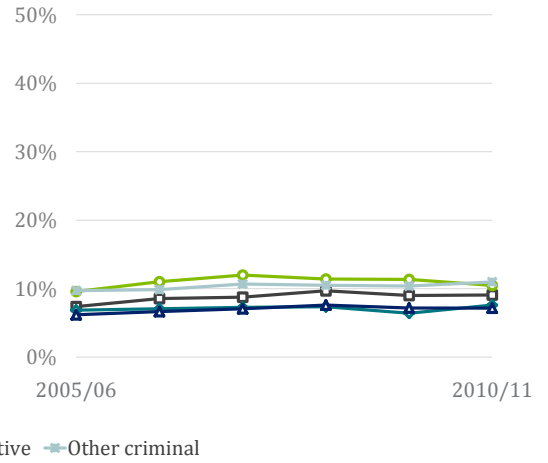
- Less than 30% of individuals with any offence type were female.
- Individuals with property offences had the highest proportion of females compared to males (not shown in graph).
- Drug-related and other criminal offences had the lowest percentage of females.
- The proportion of individuals charged with offences who were female increased over time for all offence types except for drug-related offences.

Socio-economic status by offence type (Table 17a,b)

Percentage of Albertans aged 12 to 25 with at least one criminal offence who lived in the lowest SES areas, by offence type over time



Percentage of Albertans aged 12 to 25 with at least one criminal offence who lived in the highest SES areas, by offence type over time

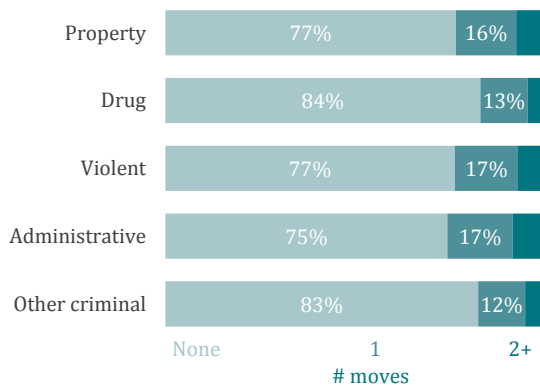


Socio-economic status (SES) captures the social and material environments in which individuals live. See *Definitions and Notes* for further clarification (p. 44).

- A lower proportion of young Albertans with drug-related offences lived in the lowest socio-economic areas compared to other individuals with other offences types.
- Individuals with violent or administrative offences were proportionally over-represented in the lowest socio-economic areas.
- There was a larger proportion of individuals with criminal offences living in the lowest socio-economic areas, regardless of offence type in comparison to those not charged with an offence (~20%; not shown in graph, see Table 5).

Residential mobility by offence type (Table 18)

Percentage of Albertans aged 12 to 25 with at least one criminal offence, by residential mobility in 2010/11 and offence type



Residential mobility was determined using the number of unique postal codes in the Alberta Health registry. Residential mobility is shown in 2010/11 (see Table 18 for mobility in each study year).

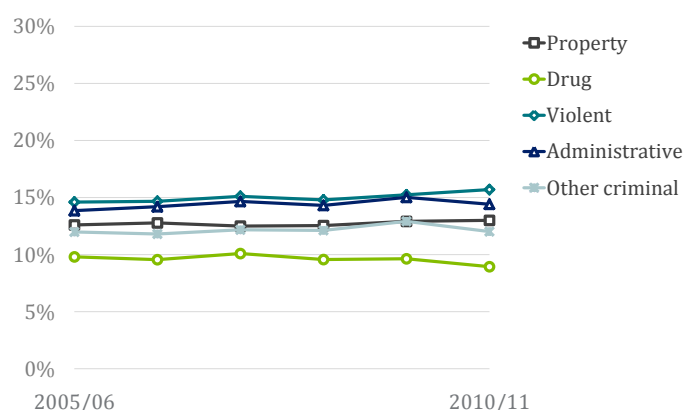
- Residential mobility was relatively similar among individuals with all offence types.
- Youth and young adults with drug-related or other criminal offences were slightly less likely to move residences as compared to individuals with the remaining offence types.

High cost health service use by offence type (Table 19)

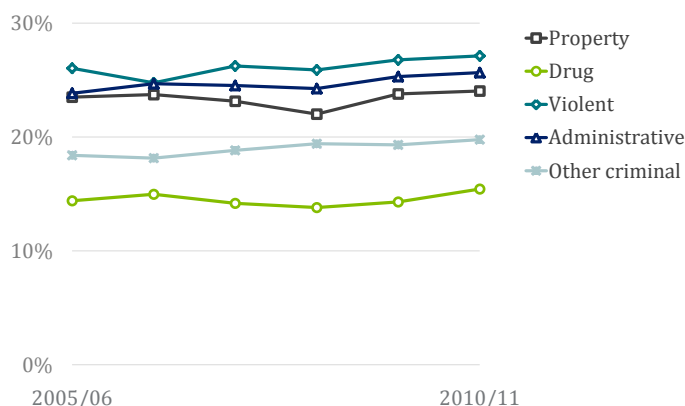
For a definition of high cost health service users see *Definitions and Notes* (p. 43).

- Young Albertans with drug offences had the lowest percentage of high-cost health service users compared to other offence types.
- The pattern remained relatively stable across the study years.

Percentage of Albertans aged 12 to 25 with at least one criminal offence who were high cost health service users, by offence type over time



Percentage of Albertans aged 12 to 25 with at least one criminal offence who used a mental health service, by offence type over time



Mental health service use by offence type (Table 20)

Mental health service use is defined as receipt of a diagnosis from select services. See *Definitions and Notes* for more details (p. 44).

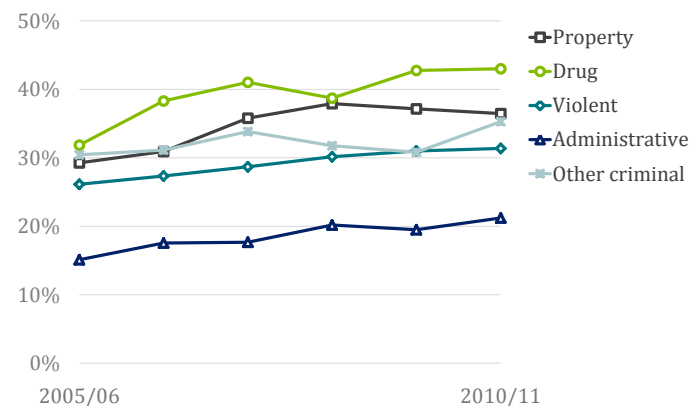
- A lower proportion of young Albertans with drug or other criminal offences received a mental health service compared to individuals with other offence types.

Educational achievement by offence type (Table 21)

This analysis considers individuals in grades 3 to 12 who were registered in the Alberta education system. See *Definitions and Notes* (p. 43).

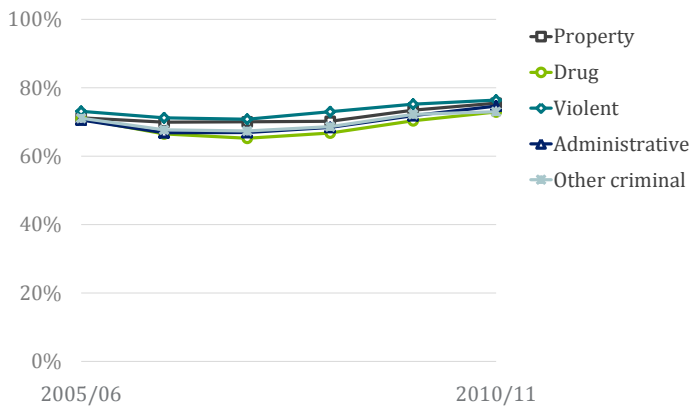
- Individuals with drug-related offences had the highest percent meeting or above educational expectations and those with administrative offences had the lowest percent. Remember that youth with administrative offences also have an offence of another category.
- There was a general trend of an increased proportion of youth meeting or above educational expectations across study years.

Percentage of Albertans aged in grades 3 to 12 with at least one criminal offence who were meeting or above educational expectations, by offence type over time



Criminal offences

Percentage of Albertans aged 12 to 25 with at least one criminal offence who were in the Alberta health care registry, by offence type over time



Health care registration by offence type (Table 22)

The Alberta Health Care Registry includes all children or youth who are eligible to receive insured hospital and physician services. See *Definitions and Notes* (p. 43) for more inclusion details.

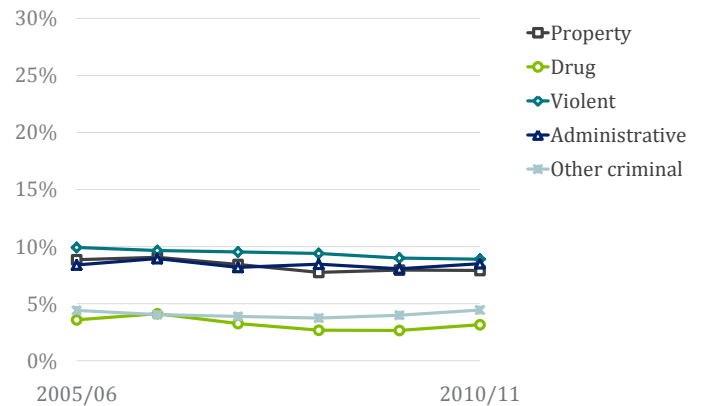
- The percentage of people registered with Alberta Health was similar across offence types.

Child Intervention service use by offence type (Table 23)

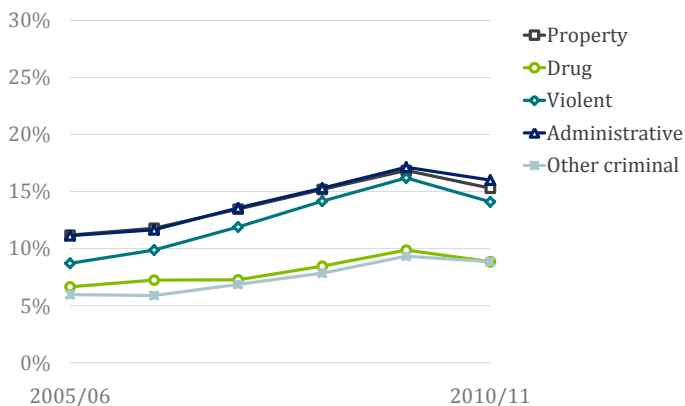
This analysis considers Albertans (aged 12 to 22 years) receiving Child Intervention services. See *Definitions and Notes* (p. 43).

- Youth with violent offences had the highest percentage receiving Child Intervention services, followed closely by youth with property or administrative offences.

Percentage of Albertans aged 12 to 22 with at least one criminal offence who received Child Intervention services, by offence type over time



Percentage of Albertans aged 18 to 25 with at least one criminal offence who received Income Support, by offence type over time



Income Support services by offence type (Table 24)

This analysis considers Albertans (aged 18 to 25 years) who received income support. See *Definitions and Notes* (p. 44).

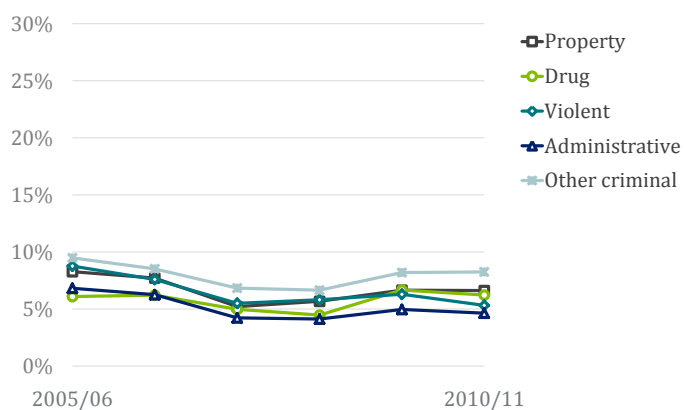
- Individuals with drug-related or other criminal offences were less likely to receive income support as compared to youth and young adults with the remaining offence types.
- Income support use increased across all offence types until 2009/10.

Post-secondary enrolment by offence type (Table 25)

This analysis considers Albertans (aged 17 to 25 years) enrolled in a post-secondary institution. See *Definitions and Notes* (p. 44).

- A higher proportion of young adults with other criminal offences were enrolled in a post-secondary institute compared to individuals with remaining offence types.
- There was a dip in enrolment from 2008/09 to 2009/10 for all offence types.

Percentage of Albertans aged 17 to 25 with at least one criminal offence who were enrolled in post-secondary, by offence type over time



Tables

TABLE 1: Number and percentage of youth and young adults by criminal offence status, number of offence counts and study year, Albertan youth and young adults aged 12 to 25 years

Number of offence counts	Study year					
	2005/06	2006/07	2007/08	2008/09	2009/10	2010/11
Number of individuals						
None	779,917	802,377	808,669	813,222	810,136	811,260
One	8,384	8,931	9,070	9,097	8,785	7,793
Two or three	8,043	8,728	9,191	8,948	8,449	8,075
Four or more	6,667	6,796	6,874	6,814	6,720	6,547
Any criminal offence	23,094	24,455	25,135	24,859	23,954	22,415
Total N	803,011	826,832	833,804	838,081	834,090	833,675
Percentage of individuals						
None	97.12	97.04	96.99	97.03	97.13	97.31
One	1.04	1.08	1.09	1.09	1.05	0.93
Two or three	1.00	1.06	1.10	1.07	1.01	0.97
Four or more	0.83	0.82	0.82	0.81	0.81	0.79
Total %	100.00	100.00	100.00	100.00	100.00	100.00
Percentage of individuals with criminal offence:						
One	36.30	36.52	36.09	36.59	36.67	34.77
Two or three	34.83	35.69	36.57	36.00	35.27	36.02
Four or more	28.87	27.79	27.35	27.41	28.05	29.21
Total %	100.00	100.00	100.00	100.00	100.00	100.00
Percentage of individuals						
Any criminal offence	2.88	2.96	3.01	2.97	2.87	2.69
Rest of population	97.12	97.04	96.99	97.03	97.13	97.31
Total %	100.00	100.00	100.00	100.00	100.00	100.00

Tables

TABLE 2: Number and percentage of youth and young adults by criminal offence status, Human Services region of residence, and study year, Albertan youth and young adults aged 12 to 25 years

Criminal offences	Human Services region of residence	Study year					
		2005/06	2006/07	2007/08	2008/09	2009/10	2010/11
Number of individuals		2005/06	2006/07	2007/08	2008/09	2009/10	2010/11
Any criminal offence	Calgary	5,033	4,930	4,804	4,783	4,936	4,393
	Central	2,344	2,488	2,647	2,665	2,474	2,324
	Edmonton	5,272	5,477	5,796	5,896	5,934	5,731
	North Central	1,337	1,425	1,476	1,469	1,518	1,367
	Northeast	361	410	449	440	409	409
	Northwest	1,479	1,597	1,664	1,627	1,612	1,498
	South	1,550	1,641	1,709	1,724	1,683	1,658
	Total	17,376	17,968	18,545	18,604	18,566	17,380
No criminal offence	Calgary	241,247	248,486	253,856	258,322	260,213	262,790
	Central	86,379	88,347	88,995	89,121	89,172	88,659
	Edmonton	219,645	225,848	226,647	229,601	231,265	232,921
	North Central	39,633	40,352	40,366	40,648	40,351	40,596
	Northeast	13,050	13,634	14,262	14,917	15,402	15,849
	Northwest	41,375	42,974	43,144	43,220	42,920	42,859
	South	57,185	58,103	58,126	58,248	58,759	59,175
	Total	698,514	717,744	725,396	734,077	738,082	742,849
Total population	Calgary	246,280	253,416	258,660	263,105	265,149	267,183
	Central	88,723	90,835	91,642	91,786	91,646	90,983
	Edmonton	224,917	231,325	232,443	235,497	237,199	238,652
	North Central	40,970	41,777	41,842	42,117	41,869	41,963
	Northeast	13,411	14,044	14,711	15,357	15,811	16,258
	Northwest	42,854	44,571	44,808	44,847	44,532	44,357
	South	58,735	59,744	59,835	59,972	60,442	60,833
	Total	715,890	735,712	743,941	752,681	756,648	760,229
Percentage of individuals		2005/06	2006/07	2007/08	2008/09	2009/10	2010/11
Any criminal offence	Calgary	2.04	1.95	1.86	1.82	1.86	1.64
	Central	2.64	2.74	2.89	2.90	2.70	2.55
	Edmonton	2.34	2.37	2.49	2.50	2.50	2.40
	North Central	3.26	3.41	3.53	3.49	3.63	3.26
	Northeast	2.69	2.92	3.05	2.87	2.59	2.52
	Northwest	3.45	3.58	3.71	3.63	3.62	3.38
	South	2.64	2.75	2.86	2.87	2.78	2.73
	Total						

Tables

TABLE 3a: Number of youth and young adults by number of offence counts, age group, and study year, Albertan youth and young adults aged 12 to 25 years

Number of offence counts	Age group	Study year					
		2005/06	2006/07	2007/08	2008/09	2009/10	2010/11
Number of individuals							
None	12 to 13	105,276	103,008	103,790	103,455	102,086	103,091
	14 to 15	115,856	114,331	108,147	105,054	105,850	105,421
	16 to 17	113,045	119,002	118,541	116,154	110,100	107,504
	18 to 19	108,345	111,929	115,548	119,021	119,035	117,883
	20 to 21	112,277	116,153	116,798	118,117	121,547	124,508
	22 to 23	114,564	119,635	121,575	123,505	123,143	123,605
	24 to 25	110,554	118,319	124,270	127,916	128,375	129,248
	Total	779,917	802,377	808,669	813,222	810,136	811,260
One	12 to 13	189	180	189	174	166	150
	14 to 15	720	784	845	876	749	600
	16 to 17	1,323	1,475	1,606	1,500	1,457	1,239
	18 to 19	1,678	1,747	1,782	1,913	1,722	1,493
	20 to 21	1,668	1,787	1,629	1,597	1,754	1,557
	22 to 23	1,522	1,541	1,610	1,570	1,435	1,408
	24 to 25	1,284	1,417	1,409	1,467	1,502	1,346
	Total	8,384	8,931	9,070	9,097	8,785	7,793
Two or three	12 to 13	107	150	141	131	105	96
	14 to 15	509	561	543	508	480	427
	16 to 17	996	1,116	1,107	1,091	945	904
	18 to 19	1,614	1,596	1,761	1,704	1,620	1,479
	20 to 21	1,722	1,948	2,015	1,860	1,864	1,751
	22 to 23	1,636	1,705	1,905	1,836	1,752	1,677
	24 to 25	1,459	1,652	1,719	1,818	1,683	1,741
	Total	8,043	8,728	9,191	8,948	8,449	8,075
Four or more	12 to 13	75	75	77	93	75	65
	14 to 15	496	485	520	491	469	438
	16 to 17	1,052	1,121	1,091	1,076	989	956
	18 to 19	1,324	1,266	1,414	1,361	1,358	1,377
	20 to 21	1,358	1,400	1,320	1,282	1,351	1,337
	22 to 23	1,292	1,275	1,285	1,294	1,217	1,203
	24 to 25	1,070	1,174	1,167	1,217	1,261	1,171
	Total	6,667	6,796	6,874	6,814	6,720	6,547
Any criminal offence	12 to 13	371	405	407	398	346	311
	14 to 15	1,725	1,830	1,908	1,875	1,698	1,465
	16 to 17	3,371	3,712	3,804	3,667	3,391	3,099
	18 to 19	4,616	4,609	4,957	4,978	4,700	4,349
	20 to 21	4,748	5,135	4,964	4,739	4,969	4,645
	22 to 23	4,450	4,521	4,800	4,700	4,404	4,288
	24 to 25	3,813	4,243	4,295	4,502	4,446	4,258
	Total	23,094	24,455	25,135	24,859	23,954	22,415

Tables

TABLE 3b: Percentage of youth and young adults by number of offence counts, age group, and study year, Albertan youth and young adults aged 12 to 25 years

Number of offence counts	Age groups	Study year					
		2005/06	2006/07	2007/08	2008/09	2009/10	2010/11
Percentage of individuals							
None	12 to 13	13.50	12.84	12.83	12.72	12.60	12.71
	14 to 15	14.85	14.25	13.37	12.92	13.07	12.99
	16 to 17	14.49	14.83	14.66	14.28	13.59	13.25
	18 to 19	13.89	13.95	14.29	14.64	14.69	14.53
	20 to 21	14.40	14.48	14.44	14.52	15.00	15.35
	22 to 23	14.69	14.91	15.03	15.19	15.20	15.24
	24 to 25	14.18	14.75	15.37	15.73	15.85	15.93
	Total	100.00	100.00	100.00	100.00	100.00	100.00
One	12 to 13	2.25	2.02	2.08	1.91	1.89	1.92
	14 to 15	8.59	8.78	9.32	9.63	8.53	7.70
	16 to 17	15.78	16.52	17.71	16.49	16.59	15.90
	18 to 19	20.01	19.56	19.65	21.03	19.60	19.16
	20 to 21	19.90	20.01	17.96	17.56	19.97	19.98
	22 to 23	18.15	17.25	17.75	17.26	16.33	18.07
	24 to 25	15.31	15.87	15.53	16.13	17.10	17.27
	Total	100.00	100.00	100.00	100.00	100.00	100.00
Two or three	12 to 13	1.33	1.72	1.53	1.46	1.24	1.19
	14 to 15	6.33	6.43	5.91	5.68	5.68	5.29
	16 to 17	12.38	12.79	12.04	12.19	11.18	11.20
	18 to 19	20.07	18.29	19.16	19.04	19.17	18.32
	20 to 21	21.41	22.32	21.92	20.79	22.06	21.68
	22 to 23	20.34	19.53	20.73	20.52	20.74	20.77
	24 to 25	18.14	18.93	18.70	20.32	19.92	21.56
	Total	100.00	100.00	100.00	100.00	100.00	100.00
Four or more	12 to 13	1.12	1.10	1.12	1.36	1.12	0.99
	14 to 15	7.44	7.14	7.56	7.21	6.98	6.69
	16 to 17	15.78	16.49	15.87	15.79	14.72	14.60
	18 to 19	19.86	18.63	20.57	19.97	20.21	21.03
	20 to 21	20.37	20.60	19.20	18.81	20.10	20.42
	22 to 23	19.38	18.76	18.69	18.99	18.11	18.37
	24 to 25	16.05	17.27	16.98	17.86	18.76	17.89
	Total	100.00	100.00	100.00	100.00	100.00	100.00
Any criminal offence	12 to 13	1.61	1.66	1.62	1.60	1.44	1.39
	14 to 15	7.47	7.48	7.59	7.54	7.09	6.54
	16 to 17	14.60	15.18	15.13	14.75	14.16	13.83
	18 to 19	19.99	18.85	19.72	20.02	19.62	19.40
	20 to 21	20.56	21.00	19.75	19.06	20.74	20.72
	22 to 23	19.27	18.49	19.10	18.91	18.39	19.13
	24 to 25	16.51	17.35	17.09	18.11	18.56	19.00
	Total	100.00	100.00	100.00	100.00	100.00	100.00

Tables

TABLE 4: Number and percentage of youth and young adults by number of offence counts, gender, and study year, Albertan youth and young adults aged 12 to 25 years

Number of offence counts	Gender	Study year						
		2005/06	2006/07	2007/08	2008/09	2009/10	2010/11	
Number of individuals								
None	Female	385,158	395,857	399,502	402,441	401,264	401,581	
	Male	394,731	406,500	409,108	410,698	408,750	409,561	
	Total	779,889	802,357	808,610	813,139	810,014	811,142	
One	Female	2,120	2,272	2,461	2,589	2,527	2,323	
	Male	6,264	6,659	6,609	6,508	6,258	5,470	
	Total	8,384	8,931	9,070	9,097	8,785	7,793	
Two or three	Female	1,663	1,808	1,949	1,869	1,957	1,923	
	Male	6,380	6,920	7,242	7,079	6,492	6,152	
	Total	8,043	8,728	9,191	8,948	8,449	8,075	
Four or more	Female	1,141	1,145	1,135	1,197	1,266	1,220	
	Male	5,526	5,651	5,739	5,617	5,454	5,327	
	Total	6,667	6,796	6,874	6,814	6,720	6,547	
Any criminal offence		Female	4,924	5,225	5,545	5,655	5,750	5,466
		Male	18,170	19,230	19,590	19,204	18,204	16,949
		Total	23,094	24,455	25,135	24,859	23,954	22,415
Percentage of individuals								
None	Female	49.39	49.34	49.41	49.49	49.54	49.51	
	Male	50.61	50.66	50.59	50.51	50.46	50.49	
	Total	100.00	100.00	100.00	100.00	100.00	100.00	
One	Female	25.29	25.44	27.13	28.46	28.76	29.81	
	Male	74.71	74.56	72.87	71.54	71.24	70.19	
	Total	100.00	100.00	100.00	100.00	100.00	100.00	
Two or three	Female	20.68	20.71	21.21	20.89	23.16	23.81	
	Male	79.32	79.29	78.79	79.11	76.84	76.19	
	Total	100.00	100.00	100.00	100.00	100.00	100.00	
Four or more	Female	17.11	16.85	16.51	17.57	18.84	18.63	
	Male	82.89	83.15	83.49	82.43	81.16	81.37	
	Total	100.00	100.00	100.00	100.00	100.00	100.00	
Any criminal offence		Female	21.32	21.37	22.06	22.75	24.00	24.39
		Male	78.68	78.63	77.94	77.25	76.00	75.61
		Total	100.00	100.00	100.00	100.00	100.00	100.00

Tables

TABLE 5a: Number of youth and young adults by number of offence counts, socio-economic status, and study year, Albertan youth and young adults aged 12 to 25 years

Number of offence counts	Socio-economic status	Study year					
		2005/06	2006/07	2007/08	2008/09	2009/10	2010/11
Number of individuals							
None	Lowest	166,127	168,823	167,567	165,637	164,239	163,617
	Low middle	144,967	146,973	145,848	146,183	145,113	144,306
	Middle	130,123	134,045	136,086	137,491	137,775	138,555
	High middle	113,639	118,225	122,265	126,230	128,406	130,689
	Highest	117,737	123,182	127,314	131,832	135,909	138,863
	Total	672,593	691,248	699,080	707,373	711,442	716,030
One	Lowest	2,099	2,096	2,122	2,185	2,104	1,874
	Low middle	1,322	1,429	1,395	1,344	1,372	1,213
	Middle	1,007	1,012	1,090	1,114	1,108	1,022
	High middle	776	863	885	827	905	828
	Highest	512	634	612	686	692	593
	Total	5,716	6,034	6,104	6,156	6,181	5,530
Two or three	Lowest	2,027	2,027	2,234	2,194	2,129	1,922
	Low middle	1,271	1,356	1,440	1,383	1,374	1,256
	Middle	1,031	1,049	1,050	1,057	1,066	1,046
	High middle	683	787	824	896	856	813
	Highest	491	477	605	608	576	557
	Total	5,503	5,696	6,153	6,138	6,001	5,594
Four or more	Lowest	1,959	1,957	1,929	1,968	2,069	1,987
	Low middle	1,093	1,085	1,146	1,078	1,025	1,016
	Middle	902	838	819	837	859	879
	High middle	509	551	545	551	598	594
	Highest	310	347	360	383	342	353
	Total	4,773	4,778	4,799	4,817	4,893	4,829
Any criminal offence							
Any criminal offence	Lowest	6,085	6,080	6,285	6,347	6,302	5,783
	Low middle	3,686	3,870	3,981	3,805	3,771	3,485
	Middle	2,940	2,899	2,959	3,008	3,033	2,947
	High middle	1,968	2,201	2,254	2,274	2,359	2,235
	Highest	1,313	1,458	1,577	1,677	1,610	1,503
	Total	15,992	16,508	17,056	17,111	17,075	15,953

Tables

TABLE 5b: Percentage of youth and young adults with criminal offences by number of offence counts, socio-economic status, and study year, Albertan youth and young adults aged 12 to 25 years

Number of offence counts	Socio-economic status	Study year					
		2005/06	2006/07	2007/08	2008/09	2009/10	2010/11
Percentage of individuals							
None	Lowest	24.70	24.42	23.97	23.42	23.09	22.85
	Low middle	21.55	21.26	20.86	20.67	20.40	20.15
	Middle	19.35	19.39	19.47	19.44	19.37	19.35
	High middle	16.90	17.10	17.49	17.84	18.05	18.25
	Highest	17.50	17.82	18.21	18.64	19.10	19.39
	Total	100.00	100.00	100.00	100.00	100.00	100.00
One	Lowest	36.72	34.74	34.76	35.49	34.04	33.89
	Low middle	23.13	23.68	22.85	21.83	22.20	21.93
	Middle	17.62	16.77	17.86	18.10	17.93	18.48
	High middle	13.58	14.30	14.50	13.43	14.64	14.97
	Highest	8.96	10.51	10.03	11.14	11.20	10.72
	Total	100.00	100.00	100.00	100.00	100.00	100.00
Two or three	Lowest	36.83	35.59	36.31	35.74	35.48	34.36
	Low middle	23.10	23.81	23.40	22.53	22.90	22.45
	Middle	18.74	18.42	17.06	17.22	17.76	18.70
	High middle	12.41	13.82	13.39	14.60	14.26	14.53
	Highest	8.92	8.37	9.83	9.91	9.60	9.96
	Total	100.00	100.00	100.00	100.00	100.00	100.00
Four or more	Lowest	41.04	40.96	40.20	40.86	42.28	41.15
	Low middle	22.90	22.71	23.88	22.38	20.95	21.04
	Middle	18.90	17.54	17.07	17.38	17.56	18.20
	High middle	10.66	11.53	11.36	11.44	12.22	12.30
	Highest	6.49	7.26	7.50	7.95	6.99	7.31
	Total	100.00	100.00	100.00	100.00	100.00	100.00
Any criminal offence	Lowest	38.05	36.83	36.85	37.09	36.91	36.25
	Low middle	23.05	23.44	23.34	22.24	22.08	21.85
	Middle	18.38	17.56	17.35	17.58	17.76	18.47
	High middle	12.31	13.33	13.22	13.29	13.82	14.01
	Highest	8.21	8.83	9.25	9.80	9.43	9.42
	Total	100.00	100.00	100.00	100.00	100.00	100.00

Tables

TABLE 6: Number and percentage of youth and young adults by number of offence counts, residential mobility, and study year, Albertan youth and young adults aged 12 to 25 years

Number of offence counts	Residential mobility	Study year					
		2005/06	2006/07	2007/08	2008/09	2009/10	2010/11
Number of individuals							
None	No moves	505,379	516,139	524,417	549,879	595,960	601,989
	One Move	97,447	97,396	101,510	91,514	62,661	62,438
	Two or more moves	19,937	18,094	18,662	15,254	9,328	9,010
	Total	622,763	631,629	644,589	656,647	667,949	673,437
One	No moves	3,996	4,227	4,359	4,440	4,869	4,416
	One Move	1,105	1,072	1,039	1,042	838	760
	Two or more moves	395	310	318	316	264	255
	Total	5,496	5,609	5,716	5,798	5,971	5,431
Two or three	No moves	4,009	4,058	4,374	4,493	4,673	4,475
	One Move	1,024	1,029	1,080	985	764	760
	Two or more moves	339	303	344	319	302	294
	Total	5,372	5,390	5,798	5,797	5,739	5,529
Four or more	No moves	3,238	3,344	3,356	3,509	3,683	3,729
	One Move	967	924	915	886	859	845
	Two or more moves	403	320	302	334	341	371
	Total	4,608	4,588	4,573	4,729	4,883	4,945
Any criminal offence							
	No moves	11,243	11,629	12,089	12,442	13,225	12,620
	One Move	3,096	3,025	3,034	2,913	2,461	2,365
	Two or more moves	1,137	933	964	969	907	920
	Total	15,476	15,587	16,087	16,324	16,593	15,905
Percentage of individuals							
None	No moves	81.15	81.72	81.36	83.74	89.22	89.39
	One Move	15.65	15.42	15.75	13.94	9.38	9.27
	Two or more moves	3.20	2.86	2.90	2.32	1.40	1.34
	Total	100.00	100.00	100.00	100.00	100.00	100.00
One	No moves	72.71	75.36	76.26	76.58	81.54	81.31
	One Move	20.11	19.11	18.18	17.97	14.03	13.99
	Two or more moves	7.19	5.53	5.56	5.45	4.42	4.70
	Total	100.00	100.00	100.00	100.00	100.00	100.00
Two or three	No moves	74.63	75.29	75.44	77.51	81.43	80.94
	One Move	19.06	19.09	18.63	16.99	13.31	13.75
	Two or more moves	6.31	5.62	5.93	5.50	5.26	5.32
	Total	100.00	100.00	100.00	100.00	100.00	100.00
Four or more	No moves	70.27	72.89	73.39	74.20	75.42	75.41
	One Move	20.99	20.14	20.01	18.74	17.59	17.09
	Two or more moves	8.75	6.97	6.60	7.06	6.98	7.50
	Total	100.00	100.00	100.00	100.00	100.00	100.00
Any criminal offence							
	No moves	72.65	74.61	75.15	76.22	79.70	79.35
	One Move	20.01	19.41	18.86	17.84	14.83	14.87
	Two or more moves	7.35	5.99	5.99	5.94	5.47	5.78
	Total	100.00	100.00	100.00	100.00	100.00	100.00

Tables

TABLE 7: Number and percentage of youth and young adults by number of offence counts, high cost health use, and study year, Albertan youth and young adults aged 12 to 25 years

Number of offence counts	High cost health use	Study year					
		2005/06	2006/07	2007/08	2008/09	2009/10	2010/11
Number of individuals							
None	High cost	29,645	30,095	30,772	31,424	31,914	32,284
	Not high cost	593,118	601,534	613,817	625,223	636,036	641,154
	Total	622,763	631,629	644,589	656,647	667,950	673,438
One	High cost	574	564	567	579	628	574
	Not high cost	4,922	5,045	5,149	5,219	5,343	4,857
	Total	5,496	5,609	5,716	5,798	5,971	5,431
Two or three	High cost	622	620	662	647	618	632
	Not high cost	4,750	4,770	5,136	5,150	5,121	4,897
	Total	5,372	5,390	5,798	5,797	5,739	5,529
Four or more	High cost	661	707	717	726	805	748
	Not high cost	3,947	3,881	3,856	4,003	4,078	4,197
	Total	4,608	4,588	4,573	4,729	4,883	4,945
Any criminal offence							
	High cost	1,857	1,891	1,946	1,952	2,051	1,954
	Not high cost	13,619	13,696	14,141	14,372	14,542	13,951
	Total	15,476	15,587	16,087	16,324	16,593	15,905
Percentage of individuals							
None	High cost	4.76	4.76	4.77	4.79	4.78	4.79
	Not high cost	95.24	95.24	95.23	95.21	95.22	95.21
	Total	100.00	100.00	100.00	100.00	100.00	100.00
One	High cost	10.44	10.06	9.92	9.99	10.52	10.57
	Not high cost	89.56	89.94	90.08	90.01	89.48	89.43
	Total	100.00	100.00	100.00	100.00	100.00	100.00
Two or three	High cost	11.58	11.50	11.42	11.16	10.77	11.43
	Not high cost	88.42	88.50	88.58	88.84	89.23	88.57
	Total	100.00	100.00	100.00	100.00	100.00	100.00
Four or more	High cost	14.34	15.41	15.68	15.35	16.49	15.13
	Not high cost	85.66	84.59	84.32	84.65	83.51	84.87
	Total	100.00	100.00	100.00	100.00	100.00	100.00
Any criminal offence							
	High cost	12.00	12.13	12.10	11.96	12.36	12.29
	Not high cost	88.00	87.87	87.90	88.04	87.64	87.71
	Total	100.00	100.00	100.00	100.00	100.00	100.00

Tables

TABLE 8: Number and percentage of youth and young adults by number of offence counts, mental health service use, and study year, Albertan youth and young adults aged 12 to 25 years

Number of offence counts	Mental health service use	Study year					
		2005/06	2006/07	2007/08	2008/09	2009/10	2010/11
Number of individuals							
None	Mental health service	41,783	42,731	43,590	44,604	45,297	46,324
	No mental health service	581,351	589,319	601,405	612,418	623,034	627,492
	Total	623,134	632,050	644,995	657,022	668,331	673,816
One	Mental health service	946	890	986	984	1,017	943
	No mental health service	4,551	4,722	4,736	4,819	4,962	4,494
	Total	5,497	5,612	5,722	5,803	5,979	5,437
Two or three	Mental health service	960	1,030	1,105	1,126	1,144	1,091
	No mental health service	4,415	4,364	4,699	4,677	4,603	4,446
	Total	5,375	5,394	5,804	5,803	5,747	5,537
Four or more	Mental health service	1,248	1,250	1,227	1,217	1,344	1,348
	No mental health service	3,367	3,348	3,353	3,515	3,543	3,600
	Total	4,615	4,598	4,580	4,732	4,887	4,948
Any criminal offence							
	Mental health service	3,154	3,170	3,318	3,327	3,505	3,382
	No mental health service	12,333	12,434	12,788	13,011	13,108	12,540
	Total	15,487	15,604	16,106	16,338	16,613	15,922
Percentage of individuals							
None	Mental health service	6.71	6.76	6.76	6.79	6.78	6.87
	No mental health service	93.29	93.24	93.24	93.21	93.22	93.13
	Total	100.00	100.00	100.00	100.00	100.00	100.00
One	Mental health service	17.21	15.86	17.23	16.96	17.01	17.34
	No mental health service	82.79	84.14	82.77	83.04	82.99	82.66
	Total	100.00	100.00	100.00	100.00	100.00	100.00
Two or three	Mental health service	17.86	19.10	19.04	19.40	19.91	19.70
	No mental health service	82.14	80.90	80.96	80.60	80.09	80.30
	Total	100.00	100.00	100.00	100.00	100.00	100.00
Four or more	Mental health service	27.04	27.19	26.79	25.72	27.50	27.24
	No mental health service	72.96	72.81	73.21	74.28	72.50	72.76
	Total	100.00	100.00	100.00	100.00	100.00	100.00
Any criminal offence							
	Mental health service	20.37	20.32	20.60	20.36	21.10	21.24
	No mental health service	79.63	79.68	79.40	79.64	78.90	78.76
	Total	100.00	100.00	100.00	100.00	100.00	100.00

Tables

TABLE 9: Number and percentage of youth and young adults by number of offence counts, educational achievement, and study year, Albertan youth and young adults in grades 3 to 12

Number of offence counts	Educational achievement	Study year					
		2005/06	2006/07	2007/08	2008/09	2009/10	2010/11
Number of individuals		2005/06	2006/07	2007/08	2008/09	2009/10	2010/11
None	Below expectations	52,149	53,821	52,992	50,795	49,776	48,372
	Meeting/above expectations	232,792	233,911	233,694	234,849	236,610	238,469
	Total	284,941	287,732	286,686	285,644	286,386	286,841
One	Below expectations	1,144	1,170	1,238	1,128	1,128	944
	Meeting/above expectations	797	869	1,019	1,092	1,067	931
	Total	1,941	2,039	2,257	2,220	2,195	1,875
Two or three	Below expectations	943	981	939	960	902	846
	Meeting/above expectations	422	487	549	537	527	500
	Total	1,365	1,468	1,488	1,497	1,429	1,346
Four or more	Below expectations	1,075	1,083	1,070	1,095	1,103	1,057
	Meeting/above expectations	189	223	246	256	272	307
	Total	1,264	1,306	1,316	1,351	1,375	1,364
Any criminal offence		3,162	3,234	3,247	3,183	3,133	2,847
	Meeting/above expectations	1,408	1,579	1,814	1,885	1,866	1,738
	Total	4,570	4,813	5,061	5,068	4,999	4,585
Percentage of individuals		2005/06	2006/07	2007/08	2008/09	2009/10	2010/11
None	Below expectations	18.30	18.71	18.48	17.78	17.38	16.86
	Meeting/above expectations	81.70	81.29	81.52	82.22	82.62	83.14
	Total	100.00	100.00	100.00	100.00	100.00	100.00
One	Below expectations	58.94	57.38	54.85	50.81	51.39	50.35
	Meeting/above expectations	41.06	42.62	45.15	49.19	48.61	49.65
	Total	100.00	100.00	100.00	100.00	100.00	100.00
Two or three	Below expectations	69.08	66.83	63.10	64.13	63.12	62.85
	Meeting/above expectations	30.92	33.17	36.90	35.87	36.88	37.15
	Total	100.00	100.00	100.00	100.00	100.00	100.00
Four or more	Below expectations	85.05	82.92	81.31	81.05	80.22	77.49
	Meeting/above expectations	14.95	17.08	18.69	18.95	19.78	22.51
	Total	100.00	100.00	100.00	100.00	100.00	100.00
Any criminal offence		69.19	67.19	64.16	62.81	62.67	62.09
	Meeting/above expectations	30.81	32.81	35.84	37.19	37.33	37.91
	Total	100.00	100.00	100.00	100.00	100.00	100.00

Tables

TABLE 10: Number and percentage of youth and young adults by number of offence counts, health care registration, and study year, Albertan youth and young adults aged 12 to 25 years

Number of offence counts	Health care registry	Study year					
		2005/06	2006/07	2007/08	2008/09	2009/10	2010/11
Number of individuals							
None	Health care registry	622,763	631,629	644,589	656,647	667,950	673,438
	Not in health care registry	108,325	113,275	108,198	105,048	100,117	97,235
	Total	731,088	744,904	752,787	761,695	768,067	770,673
One	Health care registry	5,496	5,609	5,716	5,798	5,971	5,431
	Not in health care registry	2,541	2,861	2,945	2,972	2,574	2,111
	Total	8,037	8,470	8,661	8,770	8,545	7,542
Two or three	Health care registry	5,372	5,390	5,798	5,797	5,739	5,529
	Not in health care registry	2,345	2,904	2,926	2,802	2,401	2,269
	Total	7,717	8,294	8,724	8,599	8,140	7,798
Four or more	Health care registry	4,608	4,588	4,573	4,729	4,883	4,945
	Not in health care registry	1,648	1,766	1,891	1,770	1,577	1,390
	Total	6,256	6,354	6,464	6,499	6,460	6,335
Any criminal offence							
	Health care registry	15,476	15,587	16,087	16,324	16,593	15,905
	Not in health care registry	6,534	7,531	7,762	7,544	6,552	5,770
	Total	22,010	23,118	23,849	23,868	23,145	21,675
Percentage of individuals							
None	Health care registry	85.18	84.79	85.63	86.21	86.97	87.38
	Not in health care registry	14.82	15.21	14.37	13.79	13.03	12.62
	Total	100.00	100.00	100.00	100.00	100.00	100.00
One	Health care registry	68.38	66.22	66.00	66.11	69.88	72.01
	Not in health care registry	31.62	33.78	34.00	33.89	30.12	27.99
	Total	100.00	100.00	100.00	100.00	100.00	100.00
Two or three	Health care registry	69.61	64.99	66.46	67.41	70.50	70.90
	Not in health care registry	30.39	35.01	33.54	32.59	29.50	29.10
	Total	100.00	100.00	100.00	100.00	100.00	100.00
Four or more	Health care registry	73.66	72.21	70.75	72.77	75.59	78.06
	Not in health care registry	26.34	27.79	29.25	27.23	24.41	21.94
	Total	100.00	100.00	100.00	100.00	100.00	100.00
Any criminal offence							
	Health care registry	70.31	67.42	67.45	68.39	71.69	73.38
	Not in health care registry	29.69	32.58	32.55	31.61	28.31	26.62
	Total	100.00	100.00	100.00	100.00	100.00	100.00

Tables

TABLE 11: Number and percentage of youth and young adults by number of offence counts, Child Intervention service use, and study year, Albertan youth and young adults aged 12 to 22 years

Number of offence counts	Child Intervention services	Study year					
		2005/06	2006/07	2007/08	2008/09	2009/10	2010/11
Number of individuals							
None	Child Intervention	7,490	7,553	7,168	6,599	6,164	5,878
	No Child Intervention	661,873	676,505	677,231	678,707	675,597	676,134
	Total	669,363	684,058	684,399	685,306	681,761	682,012
One	Child Intervention	338	335	342	351	316	280
	No Child Intervention	6,762	7,179	7,319	7,279	6,967	6,167
	Total	7,100	7,514	7,661	7,630	7,283	6,447
Two or three	Child Intervention	330	378	375	330	317	285
	No Child Intervention	6,254	6,698	7,097	6,800	6,449	6,049
	Total	6,584	7,076	7,472	7,130	6,766	6,334
Four or more	Child Intervention	605	609	569	550	538	544
	No Child Intervention	4,992	5,013	5,138	5,047	4,921	4,832
	Total	5,597	5,622	5,707	5,597	5,459	5,376
Any criminal offence							
	Child Intervention	1,273	1,322	1,286	1,231	1,171	1,109
	No Child Intervention	18,008	18,890	19,554	19,126	18,337	17,048
	Total	19,281	20,212	20,840	20,357	19,508	18,157
Percentage of individuals							
None	Child Intervention	1.12	1.10	1.05	0.96	0.90	0.86
	No Child Intervention	98.88	98.90	98.95	99.04	99.10	99.14
	Total	100.00	100.00	100.00	100.00	100.00	100.00
One	Child Intervention	4.76	4.46	4.46	4.60	4.34	4.34
	No Child Intervention	95.24	95.54	95.54	95.40	95.66	95.66
	Total	100.00	100.00	100.00	100.00	100.00	100.00
Two or three	Child Intervention	5.01	5.34	5.02	4.63	4.69	4.50
	No Child Intervention	94.99	94.66	94.98	95.37	95.31	95.50
	Total	100.00	100.00	100.00	100.00	100.00	100.00
Four or more	Child Intervention	10.81	10.83	9.97	9.83	9.86	10.12
	No Child Intervention	89.19	89.17	90.03	90.17	90.14	89.88
	Total	100.00	100.00	100.00	100.00	100.00	100.00
Any criminal offence							
	Child Intervention	6.60	6.54	6.17	6.05	6.00	6.11
	No Child Intervention	93.40	93.46	93.83	93.95	94.00	93.89
	Total	100.00	100.00	100.00	100.00	100.00	100.00

Tables

TABLE 12: Number and percentage of youth and young adults by number of offence counts, receipt of Income Support, and study year, Albertan youth and young adults aged 18 to 25 years

Number of offence counts	Income support	Study year					
		2005/06	2006/07	2007/08	2008/09	2009/10	2010/11
Number of individuals							
None	Income support	11,476	11,881	12,426	13,241	14,223	12,300
	No Income support	434,264	454,155	465,765	475,318	477,877	482,944
	Total	445,740	466,036	478,191	488,559	492,100	495,244
One	Income support	378	452	515	608	645	558
	No Income support	5,774	6,040	5,915	5,939	5,768	5,246
	Total	6,152	6,492	6,430	6,547	6,413	5,804
Two or three	Income support	441	536	624	710	811	685
	No Income support	5,990	6,365	6,776	6,508	6,108	5,963
	Total	6,431	6,901	7,400	7,218	6,919	6,648
Four or more	Income support	619	668	755	854	966	837
	No Income support	4,425	4,447	4,431	4,300	4,221	4,251
	Total	5,044	5,115	5,186	5,154	5,187	5,088
Any criminal offence							
	Income support	1,438	1,656	1,894	2,172	2,422	2,080
	No Income support	16,189	16,852	17,122	16,747	16,097	15,460
	Total	17,627	18,508	19,016	18,919	18,519	17,540
Percentage of individuals							
None	Income support	2.57	2.55	2.60	2.71	2.89	2.48
	No Income support	97.43	97.45	97.40	97.29	97.11	97.52
	Total	100.00	100.00	100.00	100.00	100.00	100.00
One	Income support	6.14	6.96	8.01	9.29	10.06	9.61
	No Income support	93.86	93.04	91.99	90.71	89.94	90.39
	Total	100.00	100.00	100.00	100.00	100.00	100.00
Two or three	Income support	6.86	7.77	8.43	9.84	11.72	10.30
	No Income support	93.14	92.23	91.57	90.16	88.28	89.70
	Total	100.00	100.00	100.00	100.00	100.00	100.00
Four or more	Income support	12.27	13.06	14.56	16.57	18.62	16.45
	No Income support	87.73	86.94	85.44	83.43	81.38	83.55
	Total	100.00	100.00	100.00	100.00	100.00	100.00
Any criminal offence							
	Income support	8.16	8.95	9.96	11.48	13.08	11.86
	No Income support	91.84	91.05	90.04	88.52	86.92	88.14
	Total	100.00	100.00	100.00	100.00	100.00	100.00

Tables

TABLE 13: Number and percentage of youth and young adults by number of offence counts, post-secondary enrolment, and study year, Albertan youth and young adults aged 17 to 25 years

Number of offence counts	Post-secondary enrolment	Study year					
		2005/06	2006/07	2007/08	2008/09	2009/10	2010/11
Number of individuals							
None	Post-secondary	126,194	126,832	129,275	130,580	135,215	138,546
	No post-secondary	342,682	364,137	374,772	383,982	380,982	380,060
	Total	468,876	490,969	504,047	514,562	516,197	518,606
One	Post-secondary	423	425	367	412	534	465
	No post-secondary	6,025	6,399	6,494	6,486	6,224	5,637
	Total	6,448	6,824	6,861	6,898	6,758	6,102
Two or three	Post-secondary	474	420	465	442	513	498
	No post-secondary	6,203	6,747	7,194	7,034	6,684	6,394
	Total	6,677	7,167	7,659	7,476	7,197	6,892
Four or more	Post-secondary	473	453	245	260	285	259
	No post-secondary	4,823	4,934	5,212	5,145	5,161	5,063
	Total	5,296	5,387	5,457	5,405	5,446	5,322
Any criminal offence							
	Post-secondary	1,370	1,298	1,077	1,114	1,332	1,222
	No post-secondary	17,051	18,080	18,900	18,665	18,069	17,094
	Total	18,421	19,378	19,977	19,779	19,401	18,316
Percentage of individuals							
None	Post-secondary	26.91	25.83	25.65	25.38	26.19	26.72
	No post-secondary	73.09	74.17	74.35	74.62	73.81	73.28
	Total	100.00	100.00	100.00	100.00	100.00	100.00
One	Post-secondary	6.56	6.23	5.35	5.97	7.90	7.62
	No post-secondary	93.44	93.77	94.65	94.03	92.10	92.38
	Total	100.00	100.00	100.00	100.00	100.00	100.00
Two or three	Post-secondary	7.10	5.86	6.07	5.91	7.13	7.23
	No post-secondary	92.90	94.14	93.93	94.09	92.87	92.77
	Total	100.00	100.00	100.00	100.00	100.00	100.00
Four or more	Post-secondary	8.93	8.41	4.49	4.81	5.23	4.87
	No post-secondary	91.07	91.59	95.51	95.19	94.77	95.13
	Total	100.00	100.00	100.00	100.00	100.00	100.00
Any criminal offence							
	Post-secondary	7.44	6.70	5.39	5.63	6.87	6.67
	No post-secondary	92.56	93.30	94.61	94.37	93.13	93.33
	Total	100.00	100.00	100.00	100.00	100.00	100.00

Tables

TABLE 14: Number and percentage of youth and young adults with criminal offences by offence type and study year, Albertan youth and young adults aged 12 to 25 years

Offence type	Study year					
	2005/06	2006/07	2007/08	2008/09	2009/10	2010/11
Number of individuals						
Property	10,540	10,580	10,856	10,663	10,344	9,241
Drug	3,253	3,582	3,722	3,657	3,507	3,667
Violent	6,169	6,881	6,658	6,599	6,756	6,324
Administration of justice	11,169	11,718	11,872	11,794	11,296	10,703
Other criminal	6,099	6,477	6,804	6,484	6,137	5,918
Any criminal offence	23,094	24,455	25,135	24,859	23,954	22,415
Rest of population	779,917	802,377	808,669	813,222	810,136	811,260
Total N	803,011	826,832	833,804	838,081	834,090	833,675
Percentage of individuals						
Property	1.31	1.28	1.30	1.27	1.24	1.11
Drug	0.41	0.43	0.45	0.44	0.42	0.44
Violent	0.77	0.83	0.80	0.79	0.81	0.76
Administration of justice	1.39	1.42	1.42	1.41	1.35	1.28
Other criminal	0.76	0.78	0.82	0.77	0.74	0.71
Rest of population	97.12	97.04	96.99	97.03	97.13	97.31
Percentage of individuals with criminal offences						
Property	45.64	43.26	43.19	42.89	43.18	41.23
Drug	14.09	14.65	14.81	14.71	14.64	16.36
Violent	26.71	28.14	26.49	26.55	28.20	28.21
Administration of justice	48.36	47.92	47.23	47.44	47.16	47.75
Other criminal	26.41	26.49	27.07	26.08	25.62	26.40

Individuals can be charged with more than one type of offence, so offence type is not mutually exclusive.

Tables

TABLE 15a: Number of youth and young adults with criminal offences by offence type, age group, and study year, Albertan youth and young adults aged 12 to 25 years

Offence type	Age group	Study year					
		2005/06	2006/07	2007/08	2008/09	2009/10	2010/11
Number of individuals							
Property	12 to 15*	1,365	1,426	1,519	1,459	1,323	1,113
	16 to 17	1,954	2,156	2,208	2,094	1,955	1,743
	18 to 19	2,182	2,073	2,287	2,261	2,197	1,888
	20 to 21	1,936	1,884	1,830	1,769	1,898	1,676
	22 to 23	1,715	1,583	1,607	1,616	1,505	1,446
	24 to 25	1,388	1,458	1,405	1,464	1,466	1,375
	Total	10,540	10,580	10,856	10,663	10,344	9,241
Drug	12 to 15*	117	118	106	120	100	116
	16 to 17	414	481	465	452	409	379
	18 to 19	720	752	843	813	735	755
	20 to 21	749	868	866	779	843	891
	22 to 23	675	711	787	785	737	798
	24 to 25	578	652	655	708	683	728
	Total	3,253	3,582	3,722	3,657	3,507	3,667
Violent	12 to 15*	747	788	758	755	704	643
	16 to 17	945	1,128	1,084	1,026	916	921
	18 to 19	1,103	1,161	1,196	1,179	1,237	1,213
	20 to 21	1,170	1,342	1,159	1,153	1,321	1,206
	22 to 23	1,168	1,233	1,283	1,217	1,267	1,150
	24 to 25	1,036	1,229	1,178	1,269	1,311	1,191
	Total	6,169	6,881	6,658	6,599	6,756	6,324
Administration of justice	12 to 15*	744	828	860	864	767	646
	16 to 17	1,596	1,636	1,630	1,648	1,490	1,380
	18 to 19	2,217	2,210	2,379	2,357	2,277	2,140
	20 to 21	2,451	2,579	2,496	2,368	2,460	2,380
	22 to 23	2,279	2,330	2,367	2,289	2,139	2,089
	24 to 25	1,882	2,135	2,140	2,268	2,163	2,068
	Total	11,169	11,718	11,872	11,794	11,296	10,703
Other criminal	12 to 15*	242	257	258	238	201	196
	16 to 17	573	576	615	550	480	471
	18 to 19	1,208	1,199	1,273	1,205	1,120	1,069
	20 to 21	1,420	1,602	1,607	1,464	1,459	1,326
	22 to 23	1,408	1,460	1,593	1,538	1,396	1,428
	24 to 25	1,248	1,383	1,458	1,489	1,481	1,428
	Total	6,099	6,477	6,804	6,484	6,137	5,918

*Lower age groups were combined due to low numbers in some offence types.

Tables

TABLE 15b: Percentage of youth and young adults with criminal offences by offence type, age group, and study year, Albertan youth and young adults aged 12 to 25 years

Offence type	Age groups	Study year					
		2005/06	2006/07	2007/08	2008/09	2009/10	2010/11
Percentage of individuals with criminal offences							
Property	12 to 15*	12.95	13.48	13.99	13.68	12.79	12.04
	16 to 17	18.54	20.38	20.34	19.64	18.90	18.86
	18 to 19	20.70	19.59	21.07	21.20	21.24	20.43
	20 to 21	18.37	17.81	16.86	16.59	18.35	18.14
	22 to 23	16.27	14.96	14.80	15.16	14.55	15.65
	24 to 25	13.17	13.78	12.94	13.73	14.17	14.88
	Total	100.00	100.00	100.00	100.00	100.00	100.00
	Drug	12 to 15*	3.60	3.29	2.85	3.28	2.85
16 to 17		12.73	13.43	12.49	12.36	11.66	10.34
18 to 19		22.13	20.99	22.65	22.23	20.96	20.59
20 to 21		23.02	24.23	23.27	21.30	24.04	24.30
22 to 23		20.75	19.85	21.14	21.47	21.02	21.76
24 to 25		17.77	18.20	17.60	19.36	19.48	19.85
Total		100.00	100.00	100.00	100.00	100.00	100.00
Violent		12 to 15*	12.11	11.45	11.38	11.44	10.42
	16 to 17	15.32	16.39	16.28	15.55	13.56	14.56
	18 to 19	17.88	16.87	17.96	17.87	18.31	19.18
	20 to 21	18.97	19.50	17.41	17.47	19.55	19.07
	22 to 23	18.93	17.92	19.27	18.44	18.75	18.18
	24 to 25	16.79	17.86	17.69	19.23	19.40	18.83
	Total	100.00	100.00	100.00	100.00	100.00	100.00
	Administration of justice	12 to 15*	6.66	7.07	7.24	7.33	6.79
16 to 17		14.29	13.96	13.73	13.97	13.19	12.89
18 to 19		19.85	18.86	20.04	19.98	20.16	19.99
20 to 21		21.94	22.01	21.02	20.08	21.78	22.24
22 to 23		20.40	19.88	19.94	19.41	18.94	19.52
24 to 25		16.85	18.22	18.03	19.23	19.15	19.32
Total		100.00	100.00	100.00	100.00	100.00	100.00
Other criminal		12 to 15*	3.97	3.97	3.79	3.67	3.28
	16 to 17	9.39	8.89	9.04	8.48	7.82	7.96
	18 to 19	19.81	18.51	18.71	18.58	18.25	18.06
	20 to 21	23.28	24.73	23.62	22.58	23.77	22.41
	22 to 23	23.09	22.54	23.41	23.72	22.75	24.13
	24 to 25	20.46	21.35	21.43	22.96	24.13	24.13
	Total	100.00	100.00	100.00	100.00	100.00	100.00

*Lower age groups were combined due to low numbers in some offence types.

Tables

TABLE 16: Number and percentage of youth and young adults with criminal offences by offence type, gender, and study year, Albertan youth and young adults aged 12 to 25 years

Offence type	Gender	Study year					
		2005/06	2006/07	2007/08	2008/09	2009/10	2010/11
Number of individuals							
Property	Female	2,458	2,554	2,719	2,791	2,869	2,582
	Male	8,082	8,026	8,137	7,872	7,475	6,659
	Total	10,540	10,580	10,856	10,663	10,344	9,241
Drug	Female	488	529	500	511	506	560
	Male	2,765	3,053	3,222	3,146	3,001	3,107
	Total	3,253	3,582	3,722	3,657	3,507	3,667
Violent	Female	1,234	1,337	1,382	1,415	1,518	1,438
	Male	4,935	5,544	5,276	5,184	5,238	4,886
	Total	6,169	6,881	6,658	6,599	6,756	6,324
Administration of justice	Female	2,392	2,538	2,618	2,586	2,563	2,571
	Male	8,777	9,180	9,254	9,208	8,733	8,132
	Total	11,169	11,718	11,872	11,794	11,296	10,703
Other criminal	Female	814	822	900	927	973	936
	Male	5,285	5,655	5,904	5,557	5,164	4,982
	Total	6,099	6,477	6,804	6,484	6,137	5,918
Percentage of individuals with criminal offences							
Property	Female	23.32	24.14	25.05	26.17	27.74	27.94
	Male	76.68	75.86	74.95	73.83	72.26	72.06
	Total	100.00	100.00	100.00	100.00	100.00	100.00
Drug	Female	15.00	14.77	13.43	13.97	14.43	15.27
	Male	85.00	85.23	86.57	86.03	85.57	84.73
	Total	100.00	100.00	100.00	100.00	100.00	100.00
Violent	Female	20.00	19.43	20.76	21.44	22.47	22.74
	Male	80.00	80.57	79.24	78.56	77.53	77.26
	Total	100.00	100.00	100.00	100.00	100.00	100.00
Administration of justice	Female	21.42	21.66	22.05	21.93	22.69	24.02
	Male	78.58	78.34	77.95	78.07	77.31	75.98
	Total	100.00	100.00	100.00	100.00	100.00	100.00
Other criminal	Female	13.35	12.69	13.23	14.30	15.85	15.82
	Male	86.65	87.31	86.77	85.70	84.15	84.18
	Total	100.00	100.00	100.00	100.00	100.00	100.00

Tables

TABLE 17a: Number of youth and young adults with criminal offences by offence type, socio-economic status, and study year, Albertan youth and young adults aged 12 to 25 years

Offence type	Socio-economic status	Study year					
		2005/06	2006/07	2007/08	2008/09	2009/10	2010/11
Number of individuals							
Property	Lowest	2,931	2,783	2,916	2,908	2,953	2,627
	Low middle	1,708	1,678	1,846	1,687	1,659	1,461
	Middle	1,391	1,317	1,314	1,328	1,337	1,181
	High middle	882	965	964	932	954	888
	Highest	551	630	675	736	683	615
	Total	7,463	7,373	7,715	7,591	7,586	6,772
Drug	Lowest	793	798	788	821	793	855
	Low middle	513	564	606	536	529	573
	Middle	468	440	427	461	477	515
	High middle	329	373	377	387	411	449
	Highest	223	269	299	284	283	280
	Total	2,326	2,444	2,497	2,489	2,493	2,672
Violent	Lowest	1,724	1,908	1,887	1,944	1,999	1,765
	Low middle	1,061	1,105	1,022	1,022	1,102	1,011
	Middle	791	822	803	802	865	862
	High middle	487	587	567	549	634	565
	Highest	299	336	335	343	315	346
	Total	4,362	4,758	4,614	4,660	4,915	4,549
Administration of justice	Lowest	3,195	3,096	3,207	3,219	3,261	3,102
	Low middle	1,741	1,815	1,853	1,854	1,757	1,674
	Middle	1,406	1,378	1,344	1,358	1,367	1,371
	High middle	837	912	889	934	951	890
	Highest	474	513	554	606	567	542
	Total	7,653	7,714	7,847	7,971	7,903	7,579
Other criminal	Lowest	1,479	1,535	1,608	1,518	1,564	1,399
	Low middle	964	1,032	1,050	989	943	897
	Middle	810	759	808	833	784	811
	High middle	531	603	636	651	644	622
	Highest	407	430	490	468	456	460
	Total	4,191	4,359	4,592	4,459	4,391	4,189

Tables

TABLE 17b: Percentage of youth and young adults with criminal offences by offence type, socio-economic status, and study year, Albertan youth and young adults aged 12 to 25 years

Offence type	Socio-economic status	Study year					
		2005/06	2006/07	2007/08	2008/09	2009/10	2010/11
Percentage of individuals with criminal offences		2005/06	2006/07	2007/08	2008/09	2009/10	2010/11
Property	Lowest	39.27	37.75	37.80	38.31	38.93	38.79
	Low middle	22.89	22.76	23.93	22.22	21.87	21.57
	Middle	18.64	17.86	17.03	17.49	17.62	17.44
	High middle	11.82	13.09	12.50	12.28	12.58	13.11
	Highest	7.38	8.54	8.75	9.70	9.00	9.08
	Total	100.00	100.00	100.00	100.00	100.00	100.00
Drug	Lowest	34.09	32.65	31.56	32.99	31.81	32.00
	Low middle	22.06	23.08	24.27	21.53	21.22	21.44
	Middle	20.12	18.00	17.10	18.52	19.13	19.27
	High middle	14.14	15.26	15.10	15.55	16.49	16.80
	Highest	9.59	11.01	11.97	11.41	11.35	10.48
	Total	100.00	100.00	100.00	100.00	100.00	100.00
Violent	Lowest	39.52	40.10	40.90	41.72	40.67	38.80
	Low middle	24.32	23.22	22.15	21.93	22.42	22.22
	Middle	18.13	17.28	17.40	17.21	17.60	18.95
	High middle	11.16	12.34	12.29	11.78	12.90	12.42
	Highest	6.85	7.06	7.26	7.36	6.41	7.61
	Total	100.00	100.00	100.00	100.00	100.00	100.00
Administration of justice	Lowest	41.75	40.13	40.87	40.38	41.26	40.93
	Low middle	22.75	23.53	23.61	23.26	22.23	22.09
	Middle	18.37	17.86	17.13	17.04	17.30	18.09
	High middle	10.94	11.82	11.33	11.72	12.03	11.74
	Highest	6.19	6.65	7.06	7.60	7.17	7.15
	Total	100.00	100.00	100.00	100.00	100.00	100.00
Other criminal	Lowest	35.29	35.21	35.02	34.04	35.62	33.40
	Low middle	23.00	23.68	22.87	22.18	21.48	21.41
	Middle	19.33	17.41	17.60	18.68	17.85	19.36
	High middle	12.67	13.83	13.85	14.60	14.67	14.85
	Highest	9.71	9.86	10.67	10.50	10.38	10.98
	Total	100.00	100.00	100.00	100.00	100.00	100.00

Tables

TABLE 18: Number and percentage of youth and young adults with criminal offences by offence type, residential mobility, and study year, Albertan youth and young adults aged 12 to 25 years

Offence type	Residential mobility	Study year					
		2005/06	2006/07	2007/08	2008/09	2009/10	2010/11
Number of individuals		2005/06	2006/07	2007/08	2008/09	2009/10	2010/11
Property	No moves	5,135	5,172	5,400	5,354	5,694	5,222
	One Move	1,424	1,378	1,365	1,326	1,179	1,082
	Two or more moves	574	453	459	494	472	469
	Total	7,133	7,003	7,224	7,174	7,345	6,773
Drug	No moves	1,619	1,692	1,723	1,858	1,992	2,166
	One Move	419	400	424	374	295	325
	Two or more moves	134	135	131	107	88	101
	Total	2,172	2,227	2,278	2,339	2,375	2,592
Violent	No moves	3,101	3,484	3,288	3,484	3,798	3,580
	One Move	877	898	874	846	788	781
	Two or more moves	328	260	292	298	308	301
	Total	4,306	4,642	4,454	4,628	4,894	4,662
Administration of justice	No moves	5,171	5,274	5,497	5,654	5,879	5,765
	One Move	1,591	1,539	1,490	1,502	1,364	1,335
	Two or more moves	659	549	522	553	572	605
	Total	7,421	7,362	7,509	7,709	7,815	7,705
Other criminal	No moves	3,142	3,158	3,313	3,362	3,554	3,458
	One Move	736	758	781	682	534	520
	Two or more moves	250	208	226	205	185	189
	Total	4,128	4,124	4,320	4,249	4,273	4,167
Percentage of individuals with criminal offences		2005/06	2006/07	2007/08	2008/09	2009/10	2010/11
Property	No moves	71.99	73.85	74.75	74.63	77.52	77.10
	One Move	19.96	19.68	18.90	18.48	16.05	15.98
	Two or more moves	8.05	6.47	6.35	6.89	6.43	6.92
	Total	100.00	100.00	100.00	100.00	100.00	100.00
Drug	No moves	74.54	75.98	75.64	79.44	83.87	83.56
	One Move	19.29	17.96	18.61	15.99	12.42	12.54
	Two or more moves	6.17	6.06	5.75	4.57	3.71	3.90
	Total	100.00	100.00	100.00	100.00	100.00	100.00
Violent	No moves	72.02	75.05	73.82	75.28	77.61	76.79
	One Move	20.37	19.35	19.62	18.28	16.10	16.75
	Two or more moves	7.62	5.60	6.56	6.44	6.29	6.46
	Total	100.00	100.00	100.00	100.00	100.00	100.00
Administration of justice	No moves	69.68	71.64	73.21	73.34	75.23	74.82
	One Move	21.44	20.90	19.84	19.48	17.45	17.33
	Two or more moves	8.88	7.46	6.95	7.17	7.32	7.85
	Total	100.00	100.00	100.00	100.00	100.00	100.00
Other criminal	No moves	76.11	76.58	76.69	79.12	83.17	82.99
	One Move	17.83	18.38	18.08	16.05	12.50	12.48
	Two or more moves	6.06	5.04	5.23	4.82	4.33	4.54
	Total	100.00	100.00	100.00	100.00	100.00	100.00

Tables

TABLE 19: Number and percentage of youth and young adults with criminal offences by offence type, high cost health use, and study year, Albertan youth and young adults aged 12 to 25 years

Offence type	High cost health use	Study year					
		2005/06	2006/07	2007/08	2008/09	2009/10	2010/11
Number of individuals		2005/06	2006/07	2007/08	2008/09	2009/10	2010/11
Property	High cost	899	895	903	900	949	881
	Not high cost	6,234	6,108	6,321	6,274	6,396	5,892
	Total	7,133	7,003	7,224	7,174	7,345	6,773
Drug	High cost	213	213	230	224	229	232
	Not high cost	1,959	2,014	2,048	2,115	2,146	2,360
	Total	2,172	2,227	2,278	2,339	2,375	2,592
Violent	High cost	629	681	673	685	746	732
	Not high cost	3,677	3,961	3,781	3,943	4,148	3,930
	Total	4,306	4,642	4,454	4,628	4,894	4,662
Administration of justice	High cost	1,028	1,046	1,101	1,104	1,174	1,111
	Not high cost	6,393	6,316	6,408	6,605	6,641	6,594
	Total	7,421	7,362	7,509	7,709	7,815	7,705
Other criminal	High cost	495	487	526	515	552	501
	Not high cost	3,633	3,637	3,794	3,734	3,721	3,666
	Total	4,128	4,124	4,320	4,249	4,273	4,167
Percentage of individuals with criminal offences		2005/06	2006/07	2007/08	2008/09	2009/10	2010/11
Property	High cost	12.60	12.78	12.50	12.55	12.92	13.01
	Not high cost	87.40	87.22	87.50	87.45	87.08	86.99
	Total	100.00	100.00	100.00	100.00	100.00	100.00
Drug	High cost	9.81	9.56	10.10	9.58	9.64	8.95
	Not high cost	90.19	90.44	89.90	90.42	90.36	91.05
	Total	100.00	100.00	100.00	100.00	100.00	100.00
Violent	High cost	14.61	14.67	15.11	14.80	15.24	15.70
	Not high cost	85.39	85.33	84.89	85.20	84.76	84.30
	Total	100.00	100.00	100.00	100.00	100.00	100.00
Administration of justice	High cost	13.85	14.21	14.66	14.32	15.02	14.42
	Not high cost	86.15	85.79	85.34	85.68	84.98	85.58
	Total	100.00	100.00	100.00	100.00	100.00	100.00
Other criminal	High cost	11.99	11.81	12.18	12.12	12.92	12.02
	Not high cost	88.01	88.19	87.82	87.88	87.08	87.98
	Total	100.00	100.00	100.00	100.00	100.00	100.00

Tables

TABLE 20: Number and percentage of youth and young adults with criminal offences by offence type, mental health service use, and study year, Albertan youth and young adults aged 12 to 25 years

Offence type	Mental health service use	Study year					
		2005/06	2006/07	2007/08	2008/09	2009/10	2010/11
Number of individuals							
Property	Mental health service	1,679	1,665	1,674	1,581	1,749	1,630
	No mental health service	5,464	5,351	5,557	5,601	5,604	5,149
	Total	7,143	7,016	7,231	7,182	7,353	6,779
Drug	Mental health service	313	334	323	323	340	400
	No mental health service	1,860	1,896	1,955	2,017	2,037	2,192
	Total	2,173	2,230	2,278	2,340	2,377	2,592
Violent	Mental health service	1,122	1,151	1,171	1,199	1,312	1,267
	No mental health service	3,187	3,498	3,292	3,431	3,588	3,404
	Total	4,309	4,649	4,463	4,630	4,900	4,671
Administration of justice	Mental health service	1,771	1,820	1,844	1,872	1,981	1,980
	No mental health service	5,658	5,553	5,675	5,845	5,845	5,736
	Total	7,429	7,373	7,519	7,717	7,826	7,716
Other criminal	Mental health service	760	749	814	825	826	824
	No mental health service	3,371	3,380	3,510	3,425	3,452	3,344
	Total	4,131	4,129	4,324	4,250	4,278	4,168
Percentage of individuals with criminal offences							
Property	Mental health service	23.51	23.73	23.15	22.01	23.79	24.04
	No mental health service	76.49	76.27	76.85	77.99	76.21	75.96
	Total	100.00	100.00	100.00	100.00	100.00	100.00
Drug	Mental health service	14.40	14.98	14.18	13.80	14.30	15.43
	No mental health service	85.60	85.02	85.82	86.20	85.70	84.57
	Total	100.00	100.00	100.00	100.00	100.00	100.00
Violent	Mental health service	26.04	24.76	26.24	25.90	26.78	27.12
	No mental health service	73.96	75.24	73.76	74.10	73.22	72.88
	Total	100.00	100.00	100.00	100.00	100.00	100.00
Administration of justice	Mental health service	23.84	24.68	24.52	24.26	25.31	25.66
	No mental health service	76.16	75.32	75.48	75.74	74.69	74.34
	Total	100.00	100.00	100.00	100.00	100.00	100.00
Other criminal	Mental health service	18.40	18.14	18.83	19.41	19.31	19.77
	No mental health service	81.60	81.86	81.17	80.59	80.69	80.23
	Total	100.00	100.00	100.00	100.00	100.00	100.00

Tables

TABLE 21: Number and percentage of youth and young adults with criminal offences by offence type, educational achievement, and study year, Albertan youth and young adults in grades 3 to 12

Offence type	Educational achievement	Study year					
		2005/06	2006/07	2007/08	2008/09	2009/10	2010/11
Number of individuals							
Property	Below expectations	1,886	1,956	1,965	1,830	1,823	1,628
	Meeting/above expectations	780	876	1,095	1,118	1,078	934
	Total	2,666	2,832	3,060	2,948	2,901	2,562
Drug	Below expectations	338	356	319	361	332	342
	Meeting/above expectations	158	221	222	228	248	258
	Total	496	577	541	589	580	600
Violent	Below expectations	1,026	1,103	1,059	1,063	1,008	954
	Meeting/above expectations	363	415	426	459	453	436
	Total	1,389	1,518	1,485	1,522	1,461	1,390
Administration of justice	Below expectations	1,550	1,516	1,529	1,566	1,603	1,456
	Meeting/above expectations	276	323	328	396	388	392
	Total	1,826	1,839	1,857	1,962	1,991	1,848
Other criminal	Below expectations	530	522	534	505	505	475
	Meeting/above expectations	232	236	273	235	225	259
	Total	762	758	807	740	730	734
Percentage of individuals with criminal offences							
Property	Below expectations	70.74	69.07	64.22	62.08	62.84	63.54
	Meeting/above expectations	29.26	30.93	35.78	37.92	37.16	36.46
	Total	100.00	100.00	100.00	100.00	100.00	100.00
Drug	Below expectations	68.15	61.70	58.96	61.29	57.24	57.00
	Meeting/above expectations	31.85	38.30	41.04	38.71	42.76	43.00
	Total	100.00	100.00	100.00	100.00	100.00	100.00
Violent	Below expectations	73.87	72.66	71.31	69.84	68.99	68.63
	Meeting/above expectations	26.13	27.34	28.69	30.16	31.01	31.37
	Total	100.00	100.00	100.00	100.00	100.00	100.00
Administration of justice	Below expectations	84.88	82.44	82.34	79.82	80.51	78.79
	Meeting/above expectations	15.12	17.56	17.66	20.18	19.49	21.21
	Total	100.00	100.00	100.00	100.00	100.00	100.00
Other criminal	Below expectations	69.55	68.87	66.17	68.24	69.18	64.71
	Meeting/above expectations	30.45	31.13	33.83	31.76	30.82	35.29
	Total	100.00	100.00	100.00	100.00	100.00	100.00

Tables

TABLE 22: Number and percentage of youth and young adults with criminal offences by offence type, health care registration, and study year, Albertan youth and young adults aged 12 to 25 years

Offence type	Health care registry	Study year					
		2005/06	2006/07	2007/08	2008/09	2009/10	2010/11
Number of individuals							
Property	Health care registry	7,133	7,003	7,224	7,174	7,345	6,773
	Not in health care registry	2,887	3,010	3,091	3,047	2,656	2,197
	Total	10,020	10,013	10,315	10,221	10,001	8,970
Drug	Health care registry	2,172	2,227	2,278	2,339	2,375	2,592
	Not in health care registry	891	1,121	1,213	1,165	1,002	963
	Total	3,063	3,348	3,491	3,504	3,377	3,555
Violent	Health care registry	4,306	4,642	4,454	4,628	4,894	4,662
	Not in health care registry	1,584	1,877	1,839	1,711	1,615	1,441
	Total	5,890	6,519	6,293	6,339	6,509	6,103
Administration of justice	Health care registry	7,421	7,362	7,509	7,709	7,815	7,705
	Not in health care registry	3,093	3,650	3,711	3,561	3,065	2,616
	Total	10,514	11,012	11,220	11,270	10,880	10,321
Other criminal	Health care registry	4,128	4,124	4,320	4,249	4,273	4,167
	Not in health care registry	1,678	1,967	2,093	1,941	1,645	1,541
	Total	5,806	6,091	6,413	6,190	5,918	5,708
Percentage of individuals with criminal offences							
Property	Health care registry	71.19	69.94	70.03	70.19	73.44	75.51
	Not in health care registry	28.81	30.06	29.97	29.81	26.56	24.49
	Total	100.00	100.00	100.00	100.00	100.00	100.00
Drug	Health care registry	70.91	66.52	65.25	66.75	70.33	72.91
	Not in health care registry	29.09	33.48	34.75	33.25	29.67	27.09
	Total	100.00	100.00	100.00	100.00	100.00	100.00
Violent	Health care registry	73.11	71.21	70.78	73.01	75.19	76.39
	Not in health care registry	26.89	28.79	29.22	26.99	24.81	23.61
	Total	100.00	100.00	100.00	100.00	100.00	100.00
Administration of justice	Health care registry	70.58	66.85	66.93	68.40	71.83	74.65
	Not in health care registry	29.42	33.15	33.07	31.60	28.17	25.35
	Total	100.00	100.00	100.00	100.00	100.00	100.00
Other criminal	Health care registry	71.10	67.71	67.36	68.64	72.20	73.00
	Not in health care registry	28.90	32.29	32.64	31.36	27.80	27.00
	Total	100.00	100.00	100.00	100.00	100.00	100.00

Tables

TABLE 23: Number and percentage of youth and young adults with criminal offences by offence type, Child Intervention service use, and study year, Albertan youth and young adults aged 12 to 22 years

Offence type	Child Intervention services	Study year					
		2005/06	2006/07	2007/08	2008/09	2009/10	2010/11
Number of individuals							
Property	Child Intervention	811	827	798	713	706	623
	No Child Intervention	8,341	8,295	8,653	8,486	8,172	7,243
	Total	9,152	9,122	9,451	9,199	8,878	7,866
Drug	Child Intervention	96	121	100	79	75	93
	No Child Intervention	2,579	2,809	2,967	2,870	2,749	2,846
	Total	2,675	2,930	3,067	2,949	2,824	2,939
Violent	Child Intervention	510	546	523	501	490	457
	No Child Intervention	4,623	5,106	4,957	4,829	4,955	4,676
	Total	5,133	5,652	5,480	5,330	5,445	5,133
Administration of justice	Child Intervention	780	858	797	806	736	735
	No Child Intervention	8,507	8,725	8,935	8,720	8,397	7,900
	Total	9,287	9,583	9,732	9,526	9,133	8,635
Other criminal	Child Intervention	214	206	208	187	186	200
	No Child Intervention	4,637	4,888	5,138	4,808	4,470	4,290
	Total	4,851	5,094	5,346	4,995	4,656	4,490
Percentage of individuals with criminal offences							
Property	Child Intervention	8.86	9.07	8.44	7.75	7.95	7.92
	No Child Intervention	91.14	90.93	91.56	92.25	92.05	92.08
	Total	100.00	100.00	100.00	100.00	100.00	100.00
Drug	Child Intervention	3.59	4.13	3.26	2.68	2.66	3.16
	No Child Intervention	96.41	95.87	96.74	97.32	97.34	96.84
	Total	100.00	100.00	100.00	100.00	100.00	100.00
Violent	Child Intervention	9.94	9.66	9.54	9.40	9.00	8.90
	No Child Intervention	90.06	90.34	90.46	90.60	91.00	91.10
	Total	100.00	100.00	100.00	100.00	100.00	100.00
Administration of justice	Child Intervention	8.40	8.95	8.19	8.46	8.06	8.51
	No Child Intervention	91.60	91.05	91.81	91.54	91.94	91.49
	Total	100.00	100.00	100.00	100.00	100.00	100.00
Other criminal	Child Intervention	4.41	4.04	3.89	3.74	3.99	4.45
	No Child Intervention	95.59	95.96	96.11	96.26	96.01	95.55
	Total	100.00	100.00	100.00	100.00	100.00	100.00

Tables

TABLE 24: Number and percentage of youth and young adults with criminal offences by offence type, receipt of Income Support, and study year, Albertan youth and young adults aged 18 to 25 years

Offence type	Income support	Study year					
		2005/06	2006/07	2007/08	2008/09	2009/10	2010/11
Number of individuals							
Property	Income support	807	825	960	1,080	1,191	977
	No Income support	6,414	6,173	6,169	6,030	5,875	5,408
	Total	7,221	6,998	7,129	7,110	7,066	6,385
Drug	Income support	181	216	229	261	296	281
	No Income support	2,541	2,767	2,922	2,824	2,702	2,891
	Total	2,722	2,983	3,151	3,085	2,998	3,172
Violent	Income support	390	490	573	682	832	671
	No Income support	4,087	4,475	4,243	4,136	4,304	4,089
	Total	4,477	4,965	4,816	4,818	5,136	4,760
Administration of justice	Income support	983	1,078	1,273	1,420	1,549	1,389
	No Income support	7,846	8,176	8,109	7,862	7,490	7,288
	Total	8,829	9,254	9,382	9,282	9,039	8,677
Other criminal	Income support	315	332	407	447	509	465
	No Income support	4,969	5,312	5,524	5,249	4,947	4,786
	Total	5,284	5,644	5,931	5,696	5,456	5,251
Percentage of individuals with criminal offences							
Property	Income support	11.18	11.79	13.47	15.19	16.86	15.30
	No Income support	88.82	88.21	86.53	84.81	83.14	84.70
	Total	100.00	100.00	100.00	100.00	100.00	100.00
Drug	Income support	6.65	7.24	7.27	8.46	9.87	8.86
	No Income support	93.35	92.76	92.73	91.54	90.13	91.14
	Total	100.00	100.00	100.00	100.00	100.00	100.00
Violent	Income support	8.71	9.87	11.90	14.16	16.20	14.10
	No Income support	91.29	90.13	88.10	85.84	83.80	85.90
	Total	100.00	100.00	100.00	100.00	100.00	100.00
Administration of justice	Income support	11.13	11.65	13.57	15.30	17.14	16.01
	No Income support	88.87	88.35	86.43	84.70	82.86	83.99
	Total	100.00	100.00	100.00	100.00	100.00	100.00
Other criminal	Income support	5.96	5.88	6.86	7.85	9.33	8.86
	No Income support	94.04	94.12	93.14	92.15	90.67	91.14
	Total	100.00	100.00	100.00	100.00	100.00	100.00

Tables

TABLE 25: Number and percentage of youth and young adults with criminal offences by offence type, post-secondary enrolment, and study year, Albertan youth and young adults aged 17 to 25 years

Offence type	Post-secondary enrolment	Study year					
		2005/06	2006/07	2007/08	2008/09	2009/10	2010/11
Number of individuals		2005/06	2006/07	2007/08	2008/09	2009/10	2010/11
Property	Post-secondary	633	577	399	429	502	449
	No post-secondary	7,015	6,902	7,260	7,125	7,039	6,338
	Total	7,648	7,479	7,659	7,554	7,541	6,787
Drug	Post-secondary	173	194	164	143	209	205
	No post-secondary	2,666	2,927	3,135	3,057	2,928	3,084
	Total	2,839	3,121	3,299	3,200	3,137	3,289
Violent	Post-secondary	411	396	279	294	337	265
	No post-secondary	4,279	4,816	4,794	4,759	5,021	4,710
	Total	4,690	5,212	5,073	5,053	5,358	4,975
Administration of justice	Post-secondary	629	603	414	399	469	419
	No post-secondary	8,586	9,027	9,378	9,281	8,975	8,602
	Total	9,215	9,630	9,792	9,680	9,444	9,021
Other criminal	Post-secondary	516	494	418	389	459	444
	No post-secondary	4,927	5,307	5,698	5,461	5,138	4,936
	Total	5,443	5,801	6,116	5,850	5,597	5,380
Percentage of individuals with criminal offences		2005/06	2006/07	2007/08	2008/09	2009/10	2010/11
Property	Post-secondary	8.28	7.71	5.21	5.68	6.66	6.62
	No post-secondary	91.72	92.29	94.79	94.32	93.34	93.38
	Total	100.00	100.00	100.00	100.00	100.00	100.00
Drug	Post-secondary	6.09	6.22	4.97	4.47	6.66	6.23
	No post-secondary	93.91	93.78	95.03	95.53	93.34	93.77
	Total	100.00	100.00	100.00	100.00	100.00	100.00
Violent	Post-secondary	8.76	7.60	5.50	5.82	6.29	5.33
	No post-secondary	91.24	92.40	94.50	94.18	93.71	94.67
	Total	100.00	100.00	100.00	100.00	100.00	100.00
Administration of justice	Post-secondary	6.83	6.26	4.23	4.12	4.97	4.64
	No post-secondary	93.17	93.74	95.77	95.88	95.03	95.36
	Total	100.00	100.00	100.00	100.00	100.00	100.00
Other criminal	Post-secondary	9.48	8.52	6.83	6.65	8.20	8.25
	No post-secondary	90.52	91.48	93.17	93.35	91.80	91.75
	Total	100.00	100.00	100.00	100.00	100.00	100.00

Definitions and notes

- **Age, gender,** and postal code (translated into Statistics Canada **dissemination areas**) were provided for each individual by each participating program. In the case of discrepancies between programs, the most common value for an indicator was chosen. In the event of two or more most common values, the value for the indicator was chosen randomly from the most common values.
- **The Alberta Health Care Registry** (also known as the Alberta Health Care Insurance Plan) includes all study participants (aged 0 to 30) who are eligible to receive insured hospital and physician services.
- **Child Intervention** services are focused on meeting the safety and well-being of children and helping families and communities to meet these needs. The Child Intervention Program provides services to children and youth between the ages of 0 and 17 years who are or may be at risk of being abused, neglected or otherwise in need of intervention. As well, young adults (18-22 years of age) may also be eligible for post-intervention supports through the use of Support and Financial Assistance Agreements to help them transition to adulthood.
- Individuals with **criminal offences** include those (aged 12 or older) charged with offences under various federal statutes.
- **Cross-ministry analyses included only study participants who were linked across the relevant programs.** This means that not all participants in the project were represented in every analysis. As well, only participants with a value for a given indicator were included in analyses involving that indicator (i.e., missing values were excluded).
- **Educational achievement** was computed by Alberta Education using age, grade, school type, special education codes, provincial achievement test scores (grades 3, 6, 9), home education status, number of high school credits earned, number of higher level courses taken, average grade in higher level courses, possession of an Alberta Education certificate or diploma, and Alexander Rutherford scholarship eligibility. Educational achievement was categorized as above, meeting, or below expectations for a student's age and grade. An educational achievement rating was not available for youth in 'other' schools (accredited post-secondary institutions offering high school courses for credit to adults; most youth in these schools were between 18 and 20 years), for home-schooled high school youth with no credits, and for students in grades lower than 3.
- **High cost health service use:** Cost estimates per type of service across physician visits (general practitioner or specialist), ambulatory care visits (emergency or other ambulatory care), and hospitalizations (by type of service) were obtained from the Canadian Institute for Health Information. Estimated costs per visit were summed across all visits for each individual. High cost health users were those in the top 5% of estimated costs for their age groups and genders.
- **Human Services** service delivery **regions** were used for regional analyses. Dissemination areas from the 2006 Statistics Canada Census were used to determine region. Those with missing dissemination areas are excluded from analyses. There are seven regions (Northwest, Northeast, North Central, Edmonton, Central, Calgary, South); the boundaries for these regions are shown on the map.
- **Income Support** provides financial assistance to individuals (aged 16 and older) who are unable to meet their basic needs.



Definitions and notes (continued)

- **Mental health service use** was defined by the presence or absence of mental health diagnosis codes (two or more of ICD-9: 290-309.9, 311-314.9, 316, or a single ICD-10CA: F00-F06.9, F09-F69, F84-F99, G31.2, G44.2, R41.0) in Alberta Health's databases (Inpatient—Discharge Abstract Database, Ambulatory Care, and Practitioner Payments), or in the Family Support for Children with Disabilities (FSCD) or the Assured Income for the Severely Handicapped (AISH) information systems. Only Albertans who were registered with the Alberta Health Care Insurance Plan for the full fiscal year or who had a mental health service with FSCD or AISH were included. Mental health service use is a proxy for presence of a mental health condition; some youth with mental health conditions may not have accessed mental health services in Alberta during the year, and some mental health service use may have occurred for youth who did not in fact have mental health conditions.
- **Number of offence counts** refers to offences not incidents. Youth charged with multiple offences may have had multiple offences in a single incident, or they may have been charged in multiple incidents.
- **Offence type** was determined by grouping offence codes based on categories commonly used by Statistics Canada. Violent offences include homicide, attempted murder, robbery, sexual assault, other sexual offences, major assault, uttering threats, criminal harassment, and other crimes against persons. Property offences are theft, break and enter, fraud, mischief, possession of stolen property, and other property crimes. Administration of justice or “Administrative” are fail to appear, breach of probation, unlawfully at large, fail to comply with order, and other administration of justice. The other offence category was comprised of other criminal code (weapons, prostitution, disturbing the peace and other criminal code), criminal code traffic offences (impaired driving, other criminal code traffic) and the remaining federal statutes.
- **Post-secondary** students are individuals (aged 17 to 30) enrolled in publicly-funded universities, public colleges, and technical institutes in Alberta.
- **Report population:** For this report, age groups were equated across study years. This meant that individuals over the age of 25 years were excluded from analyses by year, because no study participants were older than 25 years in the first study year.
- **Residential mobility** was defined as the number of unique postal codes within the Alberta Health Care Insurance Plan registry during the study period. Health care premiums ceased to be collected on January 1st, 2009; addresses in the registry have been updated less often since that time, reducing their accuracy.
- **Socio-economic status (SES)** captures the social and material environments in which individuals live. An individual was assigned a socio-economic status via an index based on the Statistics Canada dissemination area in which he or she resided⁹. Six indicators were included in the index: percent without a high school diploma, the employment rate, average income, percent of single families, percent of persons living alone, and percent of persons separated, divorced, or widowed. Socio-economic status values fell into five quintiles.
- **Study population:** The study included individuals with a date of birth between April 1, 1980 and March 31, 2011 and who received services from one of the programs in the study or were registered in the Alberta Health Care Insurance Plan between April 1, 2005 and March 31, 2011. The youngest study participants were those born in the last study year. The oldest study participants were 25 years old at the end of the first study year and consequently 30 years old at the end of the last study year.
- **Tables** are shown by fiscal year (or educational study year, as applicable).

References

1. Department of Justice Canada, The Youth Criminal Justice Act: Summary and Background (2006): Ottawa. Retrieved from: <http://www.justice.gc.ca/eng/cj-jp/yj-jj/tools-outils/back-hist.html>
2. Boyce, J. (2015). Police-reported crime statistics in Canada, 2014. *Juristat*, ISSN 1209-6393
3. Alam, S. (2015). Youth court statistics in Canada, 2013/14. *Juristat*, ISSN 1209-6393.
4. Maxwell, A. (2015). Adult criminal court statistics in Canada, 2013/14. *Juristat*, ISSN 1209-6393.
5. Child and Youth Data Laboratory (2012). *Offence charges among Albertan youth*. Edmonton: Alberta Centre for Child, Family and Community Research.
6. Public Safety Canada. *A statistical snapshot of youth at risk and youth offending in Canada*. Ottawa: National Crime Prevention Centre. ISBN: 978-1-100-19989-4.
7. Canadian Institute for Health Information., *Improving the Health of Canadians: Mental Health, Delinquency and Criminal Activity* (Ottawa; CIHI, 2008).
8. Joint Special Report(2009). *Kids, crime and care. Health and well-being of children in care: Youth justice experiences and outcomes*. British Columbia: Representative for Children and Youth. Office of the Provincial Health Officer.
9. Pampalon, R., Hamel, D., Garnache, P., Raymond, G. (2009). A deprivation index for health planning in Canada. *Chronic Diseases in Canada*, 29(4), 178-91.

Notes

The Child and Youth Data Laboratory

The Child and Youth Data Laboratory's (CYDL's) Longitudinal Project (*Experiences of Albertan Children and Youth over Time, 2005/06 to 2010/11*) is a joint initiative between PolicyWise for Children & Families and participating ministries in the Government of Alberta. The mandate of the CYDL is to link and analyse administrative data from Government ministries, to provide evidence for policy and program development.

The CYDL is managed by **PolicyWise for Children & Families**. PolicyWise is a not-for-profit organization whose mission is to develop and integrate evidence to inform, identify and promote effective public policy and service delivery to improve the well-being of children, families and communities in Alberta, Canada and internationally.

This project

The CYDL Longitudinal Project, focuses on understanding the experiences of Albertan children and youth as they develop. The focus is service use within and across ministries, as it is related to key indicators and to the passage of time. Studying experiences over several years of development adds a valuable level of richness to an already ground-breaking initiative, providing detailed insight into the factors that help to shape our children and youth as they develop.

Our partners

This project was carried out on behalf of six ministries of the Government of Alberta. Each ministry collaborated extensively with the CYDL on this project, and their dedication to the project is gratefully acknowledged:

Advanced Education
Education

Health
Human Services

Indigenous Relations
Justice and Solicitor General

Prepared by

Christine Werk, PhD; Leslie Twilley, PhD; and Xinjie Cui, PhD

Suggested citation

Child and Youth Data Laboratory (2016). *A profile of youth and young adults with criminal offences*. Edmonton: PolicyWise for Children & Families.

Last modified: *****, 2016

Contact CYDL

info@policywise.com
(780) 944 8630
www.policywise.com

This study is based in part on data provided by the Government of Alberta. The interpretation and conclusions contained herein are those of the researchers and do not necessarily represent the views of the Government of Alberta. The Government of Alberta does not express any opinion in relation to this study.

