



Saskatchewan
Ministry of
Social
Services

Child and Family Services Statistics

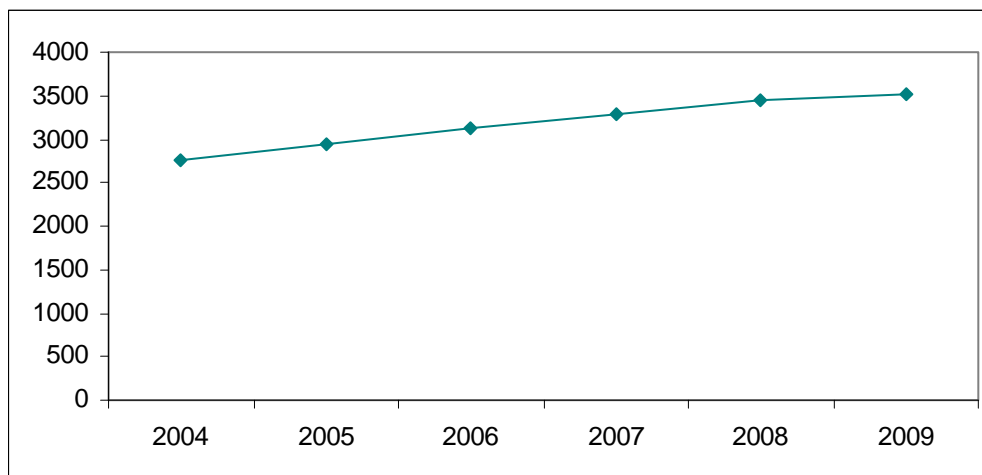
As of June 30, 2009

Child and Family Services Statistics As of June 30, 2009

	June 2004	June 2005	June 2006	June 2007	June 2008	June 2009
Children in care ¹	2769	2952	3126	3276	3443	3519
Children in foster homes ²	1640	1779	1892	1948	1909	1924
Children living in all other types of placements including extended family ³	1129	1173	1234	1328	1534	1595
Children in care on reserve ⁵	1133	1099	1123	1159	1166	1206
Foster homes	749	747	761	818	772	741
Foster homes with more than four children	/	/	/	/	135	121
Children living in foster homes with more than four children	/	/	/	/	878	790
Child Protection Investigations	633	880	810	565	532	635
Families Receiving Child Protection Services ⁴	1973	2224	2265	2051	2202	2324

- 1 - These numbers include children who were apprehended by the Ministry off-reserve and placed on-reserve.
 2 - These numbers are taken from the Average Daily Count report as at March 31 of each year except for June 2009.
 3 - Other placements include private treatment, children in care of the Ministry in Saskatchewan but living with family in other provinces, and other residential options.
 4 - This total includes Child Protection Investigations.
 5 - Reconciled numbers from INAC as of March of each year

Children in Care in Saskatchewan 2004-2009 Province-Wide



* As of June 30 of each year

Children in Care in Saskatchewan 2004-2009

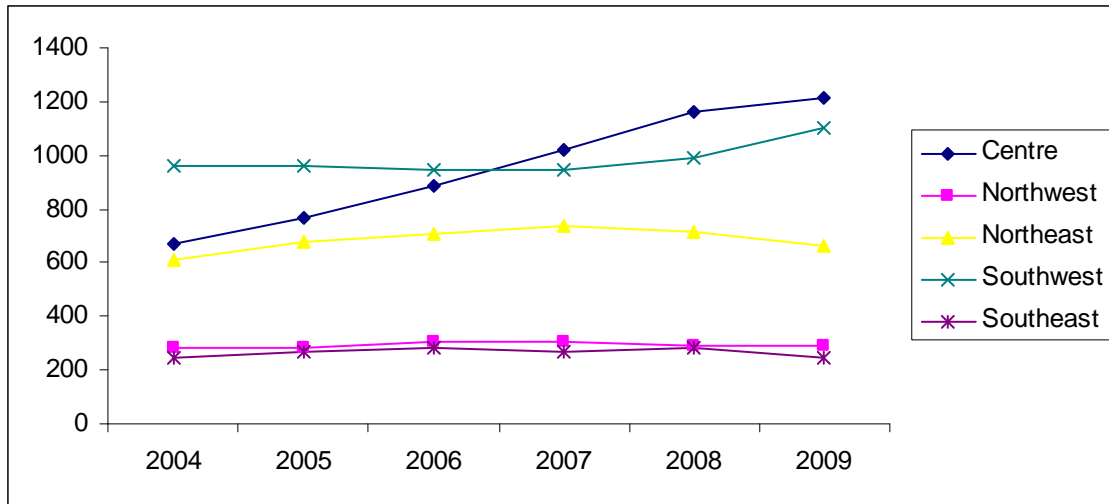
By Region**

	2004	2005	2006	2007	2008	2009
Centre	667	769	887	1020	1163	1214
Northwest	286	285	303	307	294	291
Northeast	610	675	708	734	716	664
Southwest	959	958	943	949	988	1103
Southeast	247	265	285	266	282	247
	2769	2952	3126	3276	3443	3519

* As of June 30 of each year

** Includes children taken into care off reserve and placed in care on reserve

Children in Care in Saskatchewan 2004-2009 By Region



* As of June 30 of each year

Number of Foster Homes over the Recommended Number of Four

	June 2009		June 2008	
# of children in the home	# homes	Total Children	# homes	Total Children
5	50	250	51	255
6	25	150	33	198
7	16	112	19	133
8	10	80	17	136
9	11	99	4	36
10	3	30	7	70
11	4	44	1	11
12	1	12	2	24
13	1	13	0	0
15	0	0	1	15
	121	790	135	878

* as of June 30 of each year